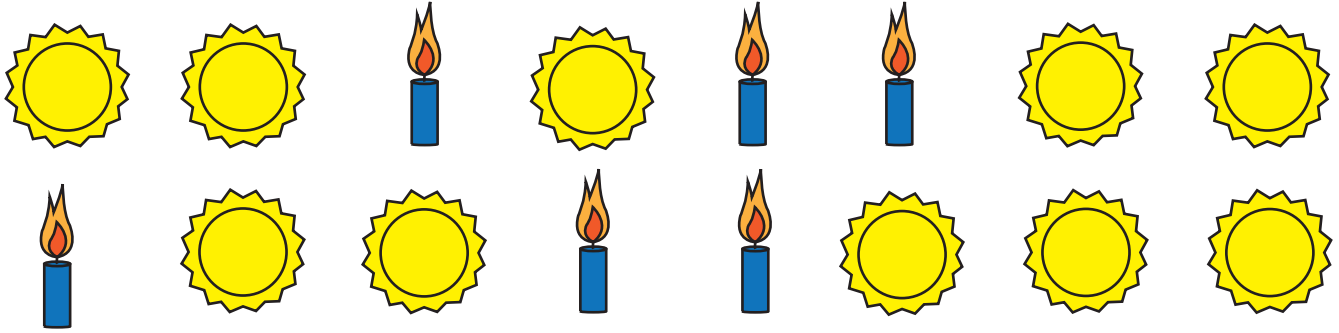


# Wicked Ratios

A ratio compares two or more numbers.



In the example above, there are six candles and ten suns. The ratio of candles to suns is 6 to 10 or **6:10**. The ratio of suns to candles is 10 to 6 or **10:6**.

The ratio can be simplified by dividing both numbers by the biggest common number. The number candles and suns can both be divided by 2, so the ratio of candles to suns is **3:6** and the ratio of suns to candles is **5:3**.

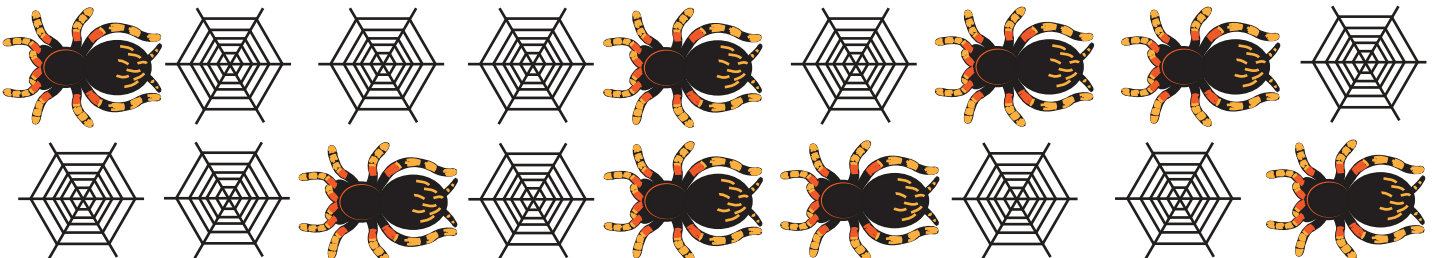


1. What is the ratio of jack o' lanterns to pumpkins? \_\_\_\_ : \_\_\_\_



2. What is the ratio of crows to bats? \_\_\_\_ : \_\_\_\_

3. What is the simplified ratio of crows to bats? \_\_\_\_ : \_\_\_\_



4. What is the ratio of spiders to webs? \_\_\_\_ : \_\_\_\_

5. What is the simplified ratio of spiders to webs? \_\_\_\_ : \_\_\_\_

6. What is the simplified ratio of webs to spiders? \_\_\_\_ : \_\_\_\_