

Grade
2 ★★

Rounding and Subtracting

Estimating numbers makes you speedy! Round the numbers before subtracting. Remember, when rounding to the nearest ten:

*If the number in the ones place is 5 or greater, round up to the nearest ten.
If the number in the ones place is 4 or less, round down to the nearest ten.*

Example: $18 \rightarrow 20$

$14 \rightarrow 10$

Example

$$94 - 60 = \boxed{90 - 60} = \boxed{30}$$

$$68 - 26 = \boxed{} = \boxed{}$$

$$89 - 65 = \boxed{} = \boxed{}$$

$$75 - 52 = \boxed{} = \boxed{}$$

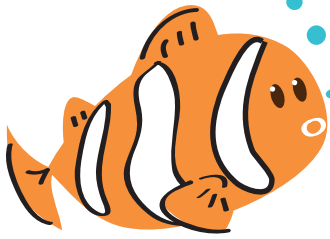
$$92 - 81 = \boxed{} = \boxed{}$$

$$89 - 75 = \boxed{} = \boxed{}$$

$$90 - 20 = \boxed{} = \boxed{}$$

$$49 - 32 = \boxed{} = \boxed{}$$

Grade
2



Estimating numbers makes you speedy! Round the numbers before subtracting. Remember, when rounding to the nearest ten:

*If the number in the ones place is 5 or greater, round up to the nearest ten.
If the number in the ones place is 4 or less, round down to the nearest ten.*

Example: $18 \rightarrow 20$

$14 \rightarrow 10$

Example

$$29 - 14 = \boxed{30 - 10} = \boxed{20}$$

$$28 - 11 = \boxed{} = \boxed{}$$

$$96 - 54 = \boxed{} = \boxed{}$$

$$87 - 22 = \boxed{} = \boxed{}$$

$$57 - 31 = \boxed{} = \boxed{}$$

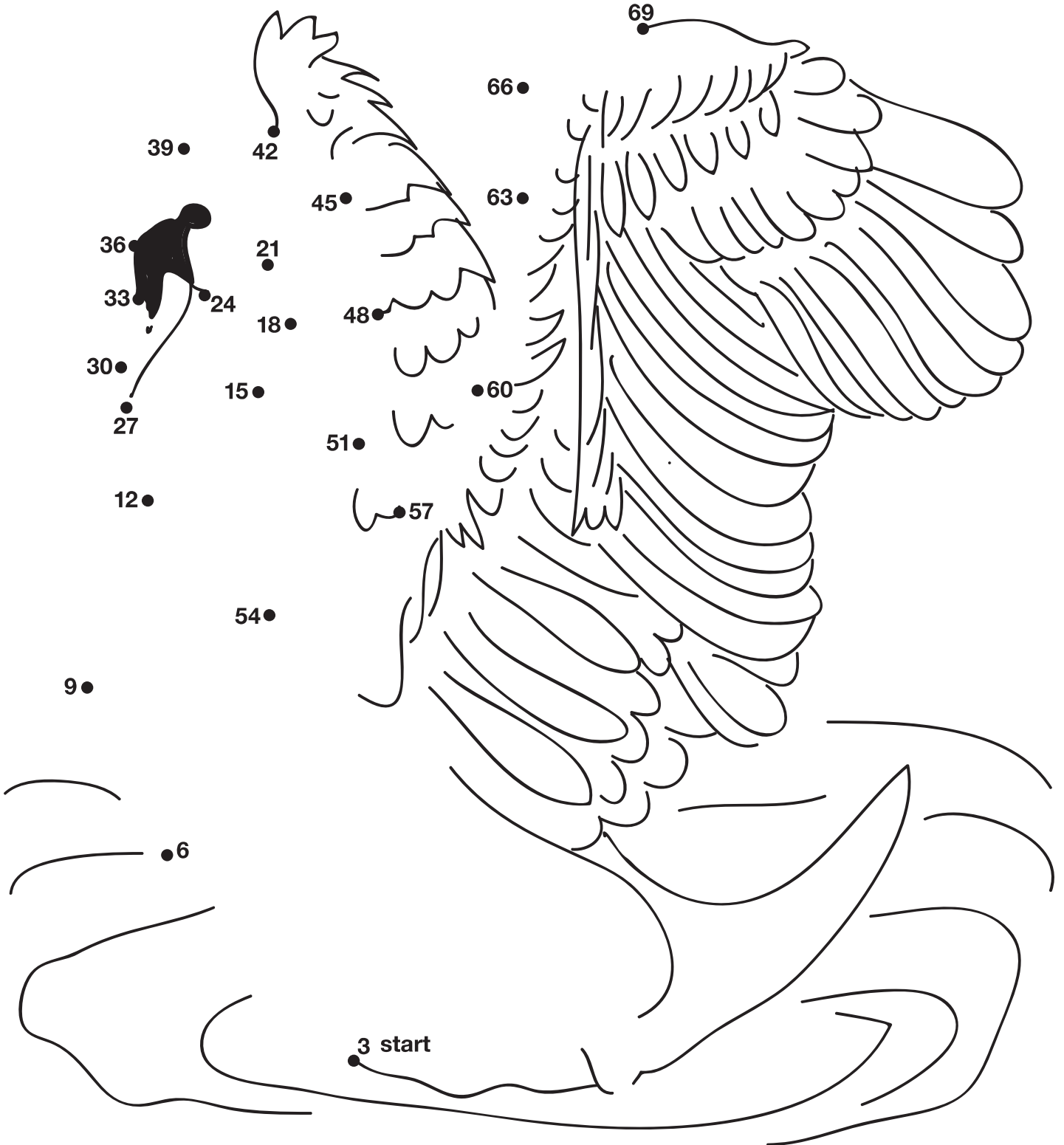
$$86 - 53 = \boxed{} = \boxed{}$$

$$74 - 21 = \boxed{} = \boxed{}$$

$$53 - 19 = \boxed{} = \boxed{}$$

Connect the Dots by 3!

All of these dots are multiples of 3. Will you connect them to draw the swan's neck and wing?



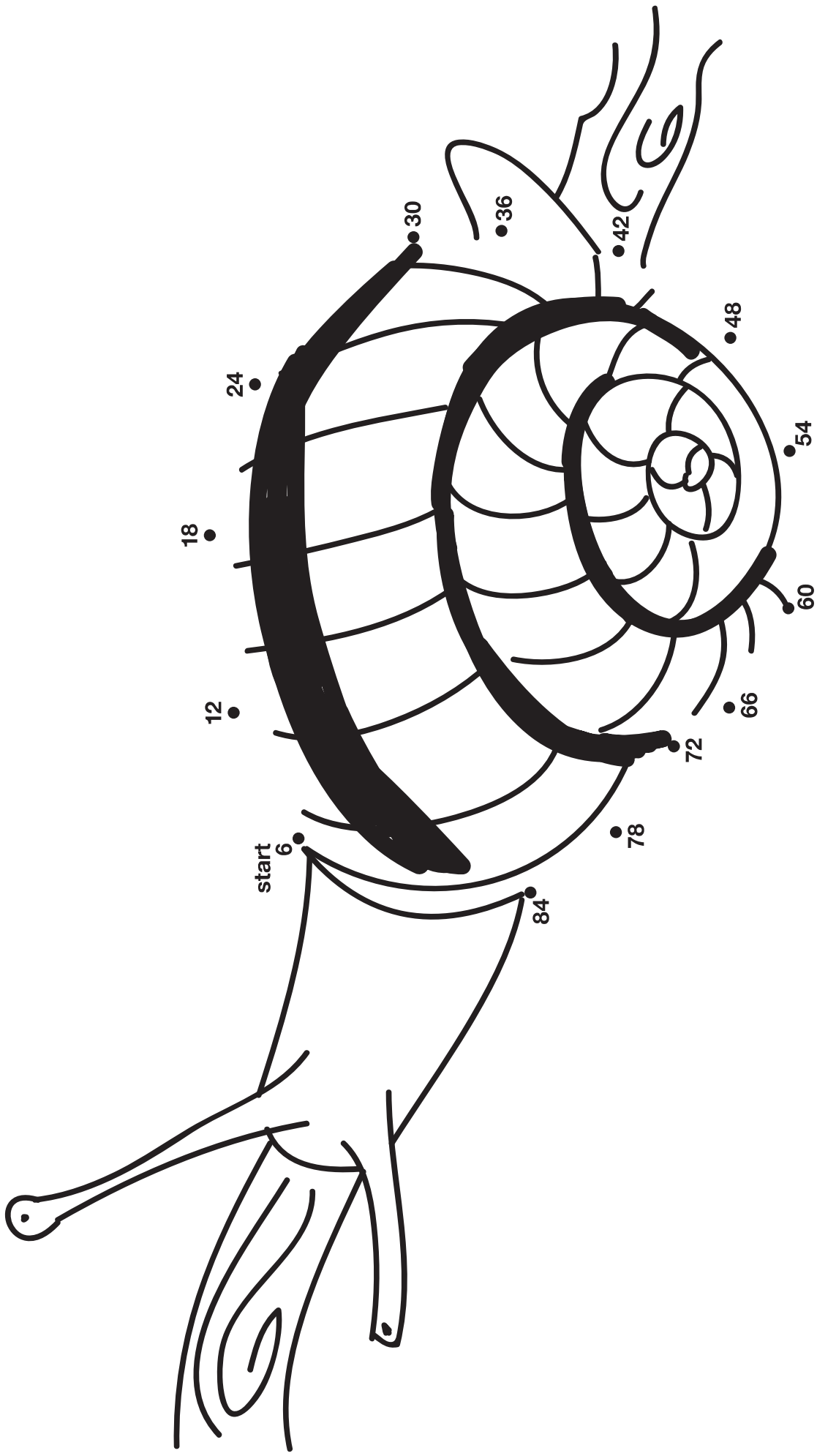
Rock Skipping

Skip across the stream on the rocks. Count by 4 as you go.
Can you write the correct number in each rock?



Connect the Dots by 6!

All of these dots are multiples of 6. Will you connect them to create the snail's shell?



Great job!

_____ is an Education.com math superstar

