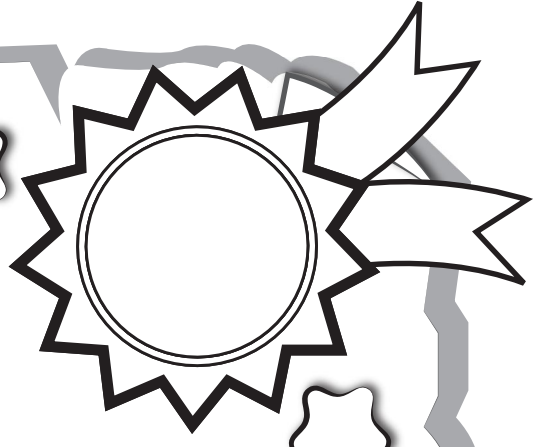


Great job!

_____ is an Education.com math superstar



Answer Sheets

Show Me the Money

Ricky's Savings Points

Tips

Waiter's Tip

Add Up to Savings

In the Party

Online Shopping

Place an Order

Let's Recycle

Price Per Unit

Back to School

Commission #1

Commission #2

Sales Tax

Show Me the Money

Want more workbooks? Join Education.com Plus to save time and money.
<http://www.education.com/education-plus/>

Answer Sheet



Ricky's Savings Points

Ricky started a savings account. The bank gave him a good deal. The more money he puts in, the more points he will earn. The rate appears below.

$$2m + 5 = \text{Savings points}$$

The letter m represents the amount of money he puts in.

If in January, Ricky puts in \$6, the number of savings points he will earn that month is

$$2(6) + 5 = \text{Savings points}$$

$$12 + 5 = \text{Savings points}$$

$$\text{Savings points} = 17$$



Find the savings points of each month below.

February: Ricky put in \$4.

$$2(4) + 5 = \text{Savings points}$$

$$8 + 5 = \text{Savings points}$$

$$\text{Savings points} = 13$$

March: Ricky put in \$8

$$2(8) + 5 = \text{Savings points}$$

$$16 + 5 = \text{Savings points}$$

$$\text{Savings points} = 21$$

April: Ricky put in \$7

$$2(7) + 5 = \text{Savings points}$$

$$14 + 5 = \text{Savings points}$$

$$\text{Savings points} = 19$$

May: Ricky put in \$3.

$$2(3) + 5 = \text{Savings points}$$

$$6 + 5 = \text{Savings points}$$

$$\text{Savings points} = 11$$

June: Ricky put in \$9

$$2(9) + 5 = \text{Savings points}$$

$$18 + 5 = \text{Savings points}$$

$$\text{Savings points} = 23$$

July: Ricky put in \$2

$$2(2) + 5 = \text{Savings points}$$

$$4 + 5 = \text{Savings points}$$

$$\text{Savings points} = 9$$

Look at the rewards below. Circle the one that Ricky can earn from his saving points from February to July.

Total Savings points = 96

30 to 60 points



61 to 90 points



91 to 120 points



Answer Sheet

5th
Grade

!"#\$

Tips

When we buy a service, we usually give out tips. Tips can vary depending on how satisfied we are with the service. Find the tips and show your work.

1. Rosie orders dessert at the cafe. The total bill is \$50. She tips the waiter 10%. How much money does the waiter get?



The waiter gets \$5.

2. Daniel orders sushi from the sushi restaurant. The total bill is \$80. He tips the sushi chef 20%. How much money does the sushi chef get?



The sushi chef gets \$16.

3. Judy took a taxi. The meter said \$45. She tips the driver 15%. How much money does the driver get in tips?



The driver gets \$6.75 in tips.

Challenge

- Robby took his dog to the pet grooming store. The service costs \$30. He tips the groomer 25%. How much in *total* does the groomer get?



The groomer gets \$37.50 in total.

Answer Sheet



Waiter's Tip

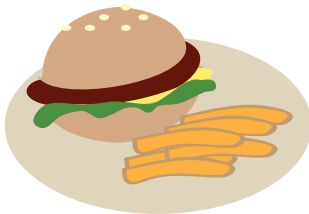
At the Yum Yum cafe, the waiters are counting their tips. Help them by answering the following questions.

1. Daniel served dinner for table 14. The check came to \$100. The customers tipped him 25%. How much was his tip?



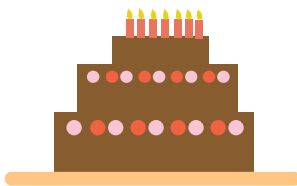
$$\text{Tip earned by Daniel} = \frac{100 \times 25}{100} = \$25$$

2. Sammy served lunch for table 7. The total came to \$55. The customers gave a 15% tip to Sammy. How much was his tip?



$$\text{Tip earned by Sammy} = \frac{55 \times 15}{100} = \$8.25$$

3. Kat served dessert for table 3. The total cost was \$20. The customers gave a tip of 12% to Kat. How much was her tip?



$$\text{Tip earned by Kat} = \frac{20 \times 12}{100} = \$2.40$$

Challenge

At the Yum Yum cafe, the waiters combine their tips and divide the total by the number of waiters. Today's tip total is \$132, and three waiters are working. How much money in tips does each waiter get?



$$\text{Tip earned by each waiter} = \frac{132}{3} = \$44$$

Answer Sheet

ANSWER SHEET

5th
Grade

Add Up To Savings!

6 Digits Addition with Decimals

Add the dollar amounts. Then answer the question below.

$$\begin{array}{r} \$5,632.15 \\ + \$2,010.37 \\ \hline \$7,642.52 \end{array}$$



$$\begin{array}{r} \$4,257.16 \\ + \$3,547.47 \\ \hline \$7,804.63 \end{array}$$

$$\begin{array}{r} \$4,301.24 \\ + \$2,376.89 \\ \hline \$6,678.13 \end{array}$$

$$\begin{array}{r} \$7,004.54 \\ + \$1,557.01 \\ \hline \$8,561.55 \end{array}$$

$$\begin{array}{r} \$6,168.35 \\ + \$2,015.78 \\ \hline \$8,184.13 \end{array}$$

$$\begin{array}{r} \$7,495.13 \\ + \$1,226.84 \\ \hline \$8,721.97 \end{array}$$

Joe saved \$6,821.75 last month. This month he saved \$2,139.35. How much has he saved in total?

\$8,961.10



Answer Sheet



In The Party

Practice
Finding
Totals

ANSWER SHEET

The total price can be found by multiplying the number of items by the cost. Answer the questions below and show your work.

1. Erika is ordering cupcakes for her party. One cupcake costs \$3. There will be 20 guests at the party, and she wants each guest to get one cupcake. How much will she spend on cupcakes?



$$20 \times 3 = 60$$

She will spend \$60 on cupcakes.

2. James bought 30 cans of soda. Each can costs \$0.50. How much did he pay?



$$30 \times 0.50 = 15$$

He paid \$15 for the soda cans.

3. A teacher bought 25 hotdogs for his students. Each one costs \$4. How much did the teacher pay?



$$25 \times 4 = 100$$

The teacher paid \$100 for the hotdogs.

Challenge

Jillian ordered sushi for the party. The egg sushi costs \$1 each. She ordered 20 of them. The salmon sushi costs \$2 each. She ordered 30 of them. The tuna roll costs \$0.50 each. She ordered 50 of them. How much in total did she pay?



$$\text{Egg sushi } 20 \times 1 = 20$$

$$\text{Salmon sushi } 30 \times 2 = 60$$

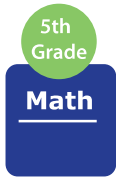
$$\text{Tuna roll } 50 \times 0.50 = 25$$

$$\text{Total cost } \$20 + \$60 + \$25 = \$105$$

She paid \$105 in total.



Answer Sheet



ANSWER SHEET

Online Shopping

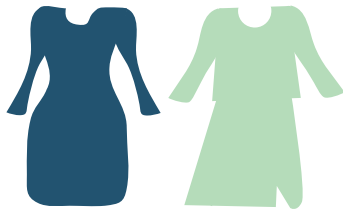
When you place an order online, there is a shipping fee. Help the shoppers below figure out their shipping fees.

1. Alisa ordered a handbag that costs \$50. The shipping fee is 12%. How much will she pay in total?



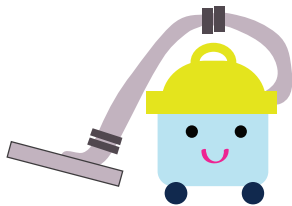
$$\text{Shipping fee } \frac{50 \times 12}{100} = 6$$
$$\text{Total} = 50 + 6 = \$56$$

2. Joy ordered two dresses. The first one costs \$200 and the second one costs \$150. The shipping fee is 10%. How much will she pay in total?



$$\text{Shipping fee } \frac{(200+150) \times 10}{100}$$
$$\frac{350 \times 10}{100} = 35$$
$$\text{Total} = 350 + 35 = \$385$$

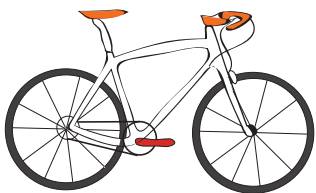
3. Jenn ordered a vacuum cleaner which cost \$180. The shipping fee is 7%. How much will she pay in total?



$$\text{Shipping fee } \frac{180 \times 7}{100} = 12.6$$
$$\text{Total} = 180 + 12.60 = \$192.60$$

Challenge

Roy wants to order a bicycle. The red bicycle costs \$300. The shipping fee is 5%. The blue bicycle costs \$350, and the shipping fee is 2%. What bicycle should Roy order so the total price is cheaper?



$$\text{red bicycle shipping fee } \frac{300 \times 5}{100} = 15$$

$$\text{Total cost} = 300 + 15 = \$315$$

$$\text{blue bicycle shipping fee } \frac{350 \times 2}{100} = 7$$

$$\text{Total cost} = 350 + 7 = \$357$$

Roy should order the red bicycle.