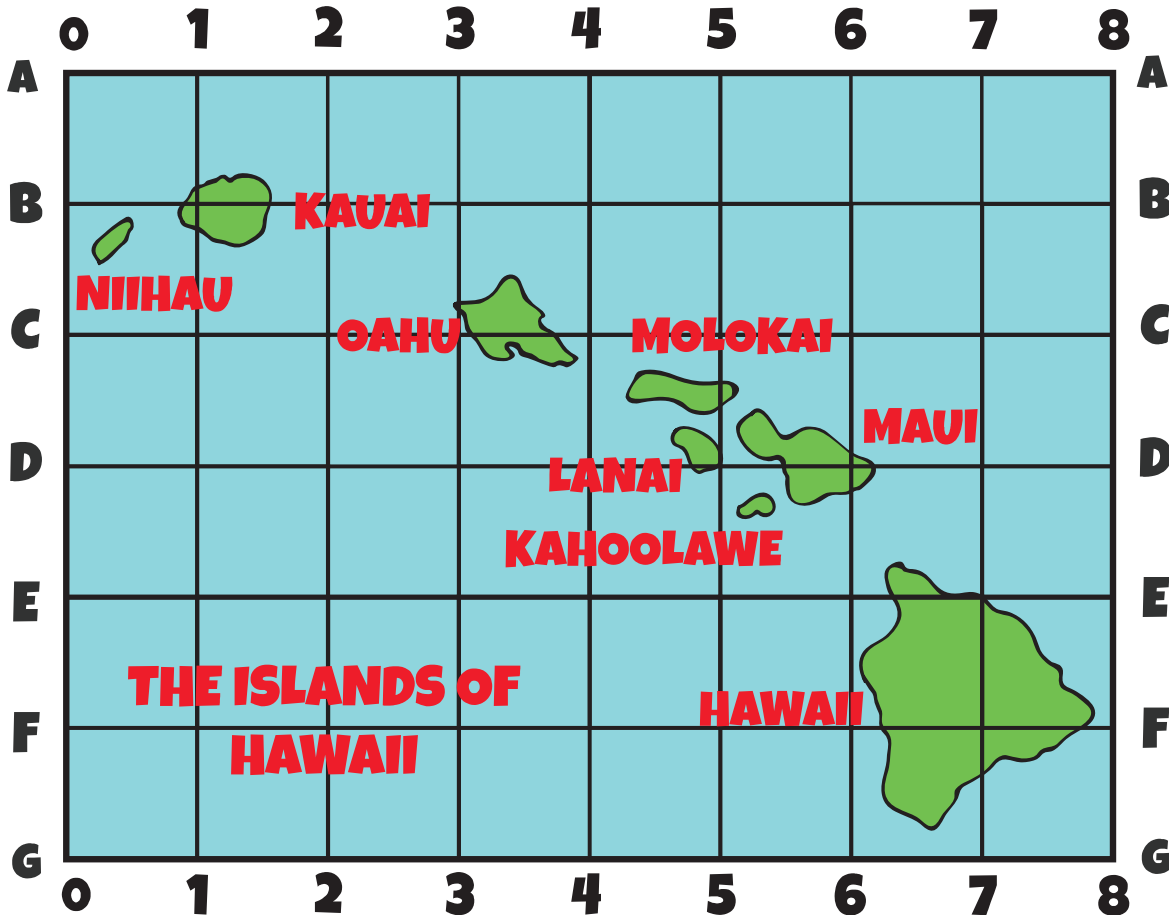


# HOW TO READ A MAP USING A GRID AND INDEX

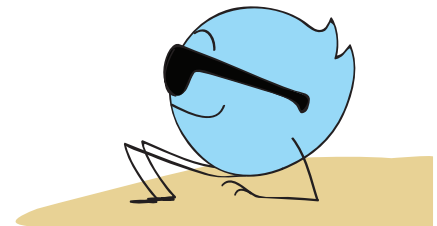
Before smart phones, map grids were how people traveled from one place to another. On your travels, you may not always get cell phone service, so you'll need to learn how to use map grids, too.



## DIRECTIONS:

Start with the letters along the sides of the map. That is the first part of the location. Then, use the numbers along the top and bottom of the map next. That is the second part of the location. Where the two lines meet, that is your destination.

1. B, 1 \_\_\_\_\_
2. E, 7 \_\_\_\_\_
3. D, 6 \_\_\_\_\_
4. D, 5 \_\_\_\_\_



Answers: 1. Kauai 2. Hawaii 3. Maui 4. Lanai

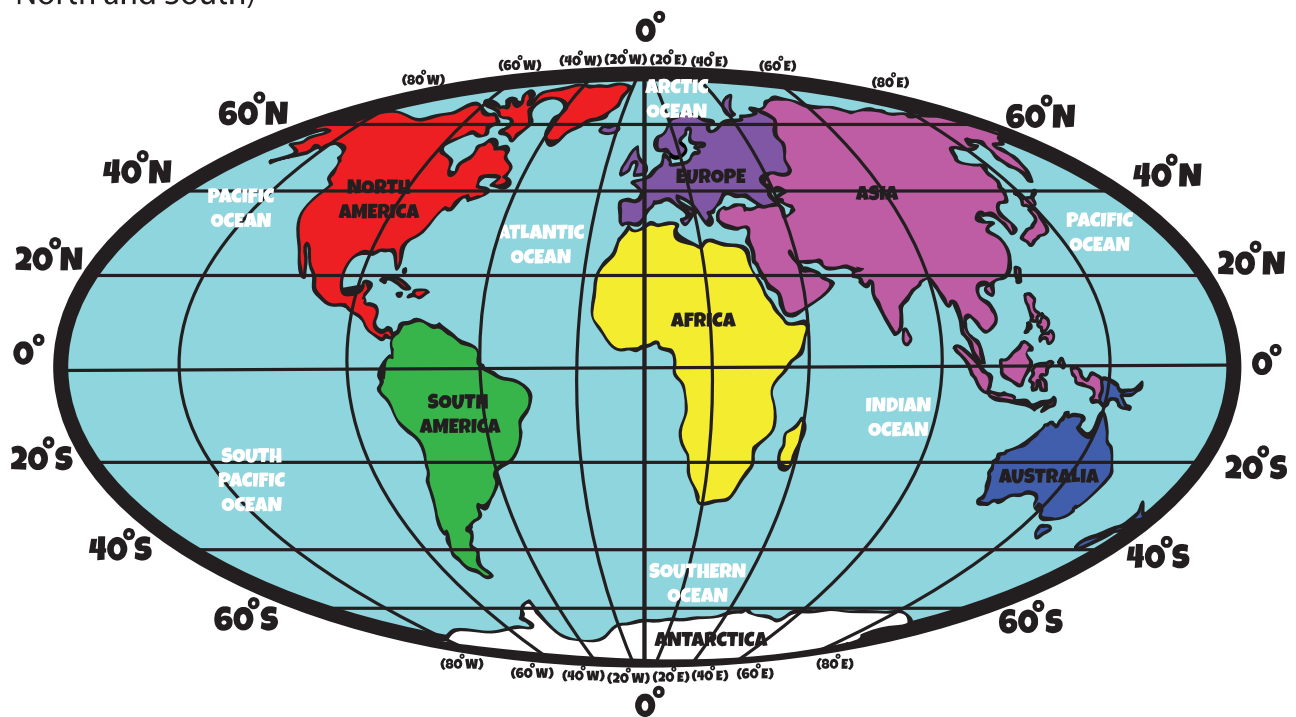
# WHAT IS LATITUDE AND LONGITUDE, AND HOW DO YOU USE IT?

Some of this journey will take place over water. To navigate the ocean, you will have to understand latitude and longitude coordinates.

## What is latitude and longitude?

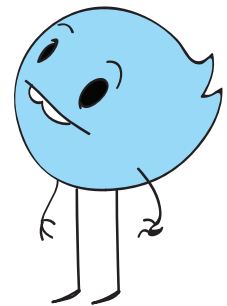
**LATITUDE:** Lines that go around the globe (they go by the directions East and West)

**LONGITUDE:** Lines that point from top to bottom of the globe (they go by the directions North and South)



**EXAMPLE:** What continent is at 20° South and 40° West? (South America)

1. What continent is 40° North and 20° East? \_\_\_\_\_
2. What ocean is found at 20° South and 60° East? \_\_\_\_\_
3. What continent is at 60° South and 60° East? \_\_\_\_\_
4. What ocean is at 40° South and 80° West? \_\_\_\_\_
5. What continent is at 40° North and 80° East? \_\_\_\_\_

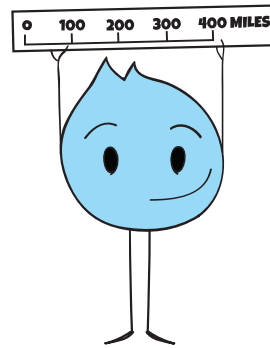
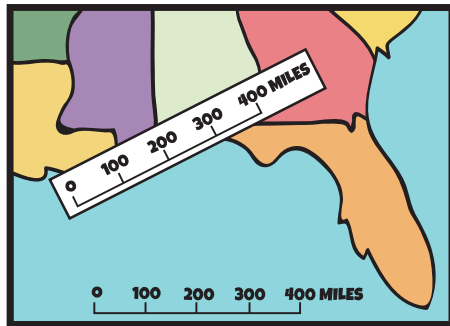


**Answers:** 1. Europe 2. Indian Ocean 3. Antarctica 4. Southern Ocean 5. Asia

# MAP SCALE

Everything looks so small on a map, so how can you tell how far you need to travel? The map scale will help you figure out the distance.

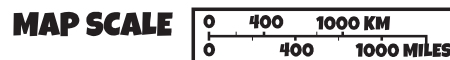
The picture below has a map scale along the bottom of the map that goes from 0 miles to 400 miles, counting by hundreds. The boy using the map wanted to figure out about how far it was from Louisiana to Georgia, so he used a piece of white paper, and copied the map scale down. Now, he can use the paper like a ruler, and measure whatever distances he wants on the map.



**DIRECTIONS:** Cut off the map scale at the bottom of the page. It matches the map below. Use it to measure the distances given.



1. Distance from Bogota to Quito.  
\_\_\_\_\_
2. Distance from La Paz to Brasilia.  
\_\_\_\_\_
3. Distance from Asuncion to Quito.  
\_\_\_\_\_
4. Distance from Georgetown to Santiago.  
\_\_\_\_\_
5. Distance from Brasilia to Bogota.  
\_\_\_\_\_



# MAPS IN HISTORY

Sometimes in order to find treasure, you'll need to use old maps to track them down!  
Here are some maps you've come across while travelling.

**DIRECTIONS:** Check out the historical maps below and answer the questions.



**NICOLAUS GERMANUS DREW THIS MAP IN 1467**

1. What continents do you think this map is showing?

\_\_\_\_\_

\_\_\_\_\_

and \_\_\_\_\_



**WILLEM BLAEU DREW THIS MAP IN 1665**

2. What continents do you think this map is showing?

\_\_\_\_\_

and \_\_\_\_\_



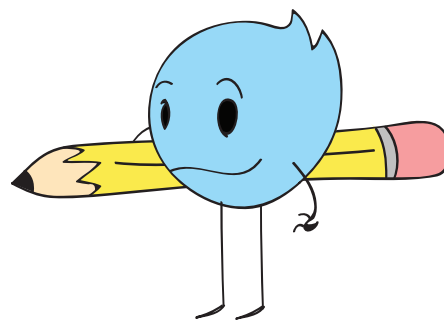
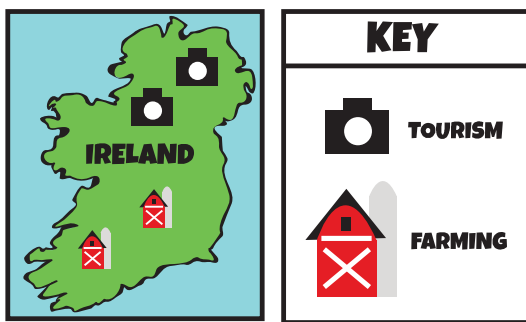
**Answers:** 1. Asia, Africa, and South America 2. North America and Europe

# ECONOMIC OR RESOURCE MAPS

In some countries, you'll have to look at economic maps (also called resource maps) to find out if it is worth it to look there for amazing items. A resource map tells you about a country's natural resources (what items are from that area), and about the economy (what they sell).

## DIRECTIONS:

Look at the example of a resource/economic map below. Then, read the paragraph. It describes the resources and economy for India. Create your own economic/resource map by using the information in the paragraph. Come up with symbols for each product or service based on what you read.



*India has a large economy. It is a huge grower of fruit such as: bananas, apples, mangos, pomegranate and oranges. India also grows vegetables; mainly onions and potatoes. The country grows flowers to sell to other countries, too. India also specializes in spices for food. India's booming economy isn't just what they grow above ground, but also what can be found below the earth. India has oil buried underneath the dirt. India also has many factories where they make and package products such as cereal. A large part of India's business is providing phone support to customers all around the world. India is a very busy place.*

