

4. Select two words that are synonyms, plus an antonym of these two synonyms, from the list of words below.

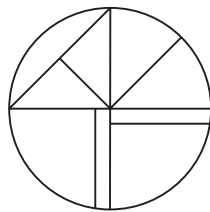
contrary, loyal, recalcitrant, compliant, imprudent, rash, withdrawn.

5. 
$$\frac{12.25 \times 8}{5\% \times 280} = \frac{25\% \times 532}{?}$$

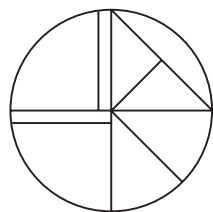
Complete the equation by correctly identifying the missing part of the calculation from the list of options below.

a.  $\frac{152}{9}$    b.  $4.75 \times 4$    c.  $3.5 \times 5.5$    d.  $38 \div 2.5$    e.  $17 + 2.5$

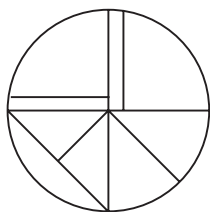
- 6.



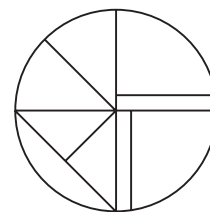
Which of the figures below can be formed by rotating the figure above?



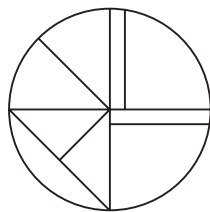
A



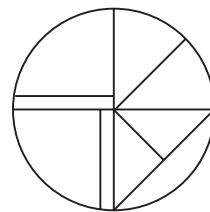
B



C



D



E

7. A B C D E F G H

What letter is immediately to the left of the letter which is two to the left of the letter that comes midway between the letter two to the right of the letter F and the letter two to the left of the letter D?

Answer

8. Her novels reflect her background, highly allusive and in style, they draw their characters from academic and artistic works.

One word has been removed from the passage above. Select that word from the choice below and reinstate it into its correct place in the passage.

a. rich b. indirect c. written d. verbose e. literary f. strangely

9. What is the value of  $\frac{3}{8} + \frac{5}{16}$  as a decimal?

Answer

10. Select two words that are synonyms, plus an antonym of these two synonyms, from the list of words below.

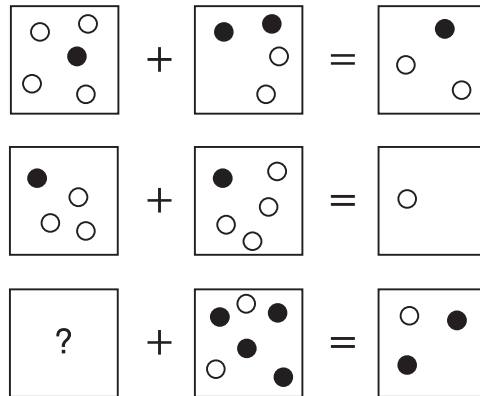
sphere, uniform, element, militia, miscellaneous, regalia, assorted

11. 100, 99.8, 99.2, ?, 92, 75.8

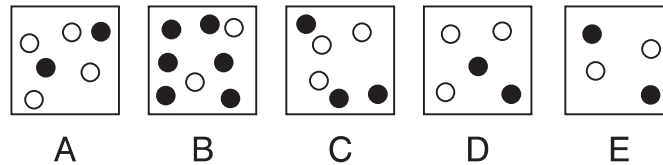
What number should replace the question mark?

Answer

12.



Which square below should replace the question mark?



13. What is the longest word in the English language that can be produced from the ten letters below? No letter may be used more than once.

H T E R C I K F A O

---

14. Which is the odd one out?

INTEGRAL, ALTERING, TRIANGLE, REALIGNS,  
ALERTING

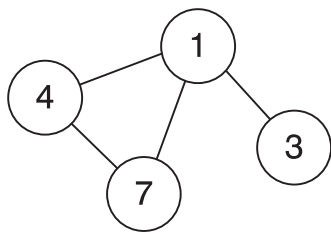
15. What is the value of  $56 + -19$ ?

Answer

16. Which two words are closest in meaning?

enticing, anodyne, seditious, mutinous, sealed, profane

17. Insert the numbers listed into the circles so that – for any particular circle – the sum of the numbers in the circles connected to it equals the value corresponding to that circled number in the list. For example:

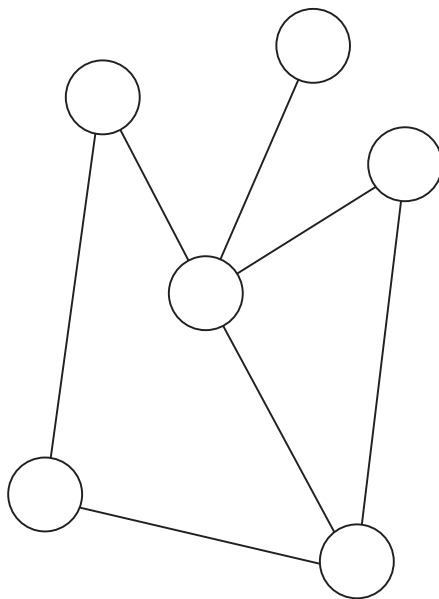


$$1 = 14 (4 + 7 + 3)$$

$$3 = 1$$

$$4 = 8 (1 + 7)$$

$$7 = 5 (1 + 4)$$



$$1 = 9$$

$$2 = 11$$

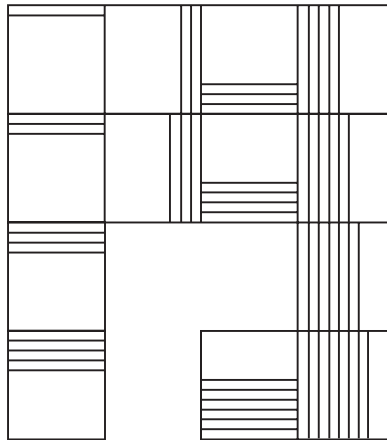
$$3 = 16$$

$$4 = 3$$

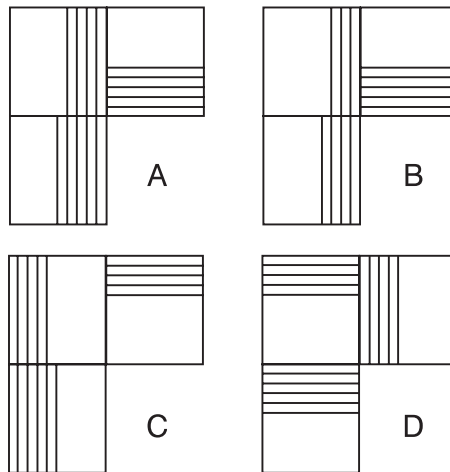
$$5 = 5$$

$$6 = 6$$

18.



Which is the missing section?



19.  $\frac{5}{8} \div \frac{9}{16} = ?$

Complete the equation by correctly identifying the missing part of the calculation from the list of options below.

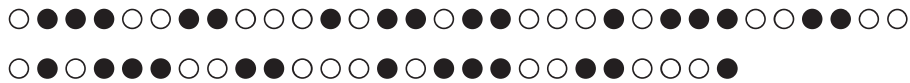
- a.  $0.9^2$    b.  $\frac{1000}{99}$    c.  $1.01^2$    d.  $\frac{25}{22.5}$    e.  $0.95^2$

20. Identify two words (one from each set of brackets) that form a connection (analogy), thereby relating to the words in capitals in the same way.

PLUTOCRACY (elderly, citizens, wealthy, mob)

THEOCRACY (army, priesthood, party, ruler)

- 21.



Which two symbols are missing?

- A ○ ●
- B ○ ○
- C ● ○
- D ● ●

22. Identify two words (one from each set of brackets) that form a connection (analogy), thereby relating to the words in capitals in the same way.

NEW (bio-, neo-, neuro-, proto-)

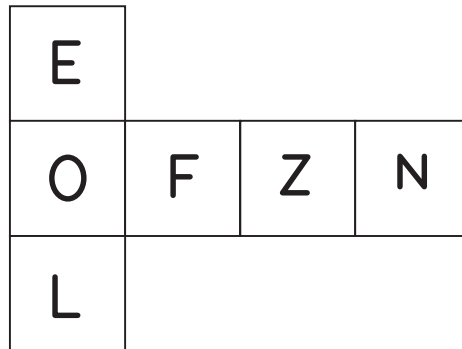
OLD (ana-, haema-, palaeo-, ferro-)

23. In the two numerical sequences below, one number that appears in the top sequence should appear in the bottom sequence and vice versa. Which two numbers should be changed round?

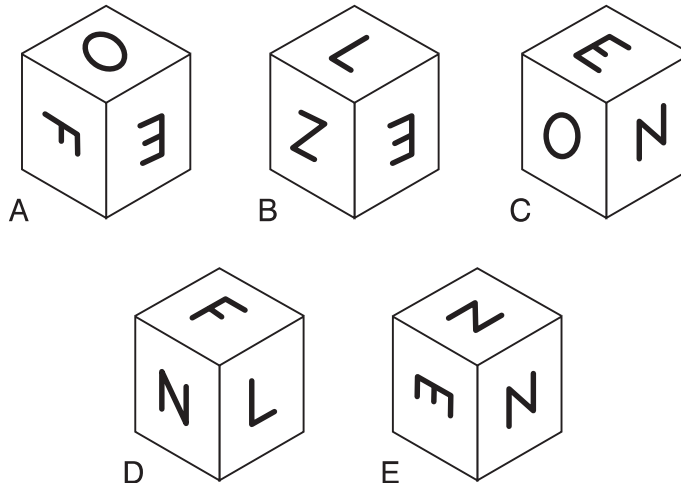
24, 41, 62, 78, 98

14, 32, 48, 59, 74

24.



When the above is folded to form a cube, just two of the following can be produced. Which two?



25. Change the position of four words only in the sentence below in order for it to make complete sense.

Peacekeeping has always been conducted with the differences of the disputants, who at the very least agree to consent to settle their safety and not endanger the attempt of the peace-keeping forces.

26. 63 ( 97 ) 49

56 ( 73 ) 24

? ( 36 ) 54

What number should replace the question mark?

Answer

27. Which word in brackets is most opposite in meaning to the word in capitals?

PROTRUBERANT (brief, proud, concave, calm, smooth)

28. Each set of nine numbers relates to the other in a certain way. Work out the logic behind the numbers in the left-hand box in order to determine which number is missing from the right-hand box.

2	3	6		1	1	3
4	2	7		4	?	9
5	3	9		7	1	9

Answer



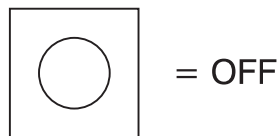
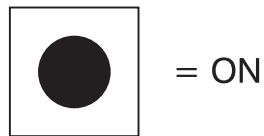
29. An electrical circuit wiring a set of four lights depends on a system of switches A, B, C and D. Each switch when working has the following effect on the lights:

Switch A turns lights 1 and 2 on/off or off/on

Switch B turns lights 2 and 4 on/off or off/on

Switch C turns lights 1 and 3 on/off or off/on

Switch D turns lights 3 and 4 on/off or off/on



In the following, switches D C B A are thrown in turn, with the result that Figure 1 is transformed into Figure 2. One of the switches is therefore not working and has had no effect on the numbered lights.

Identify which one of the switches is not working.

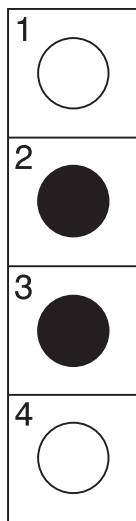


Figure 1

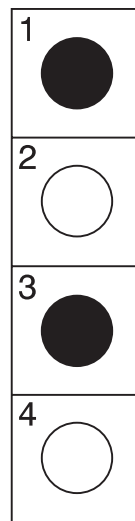
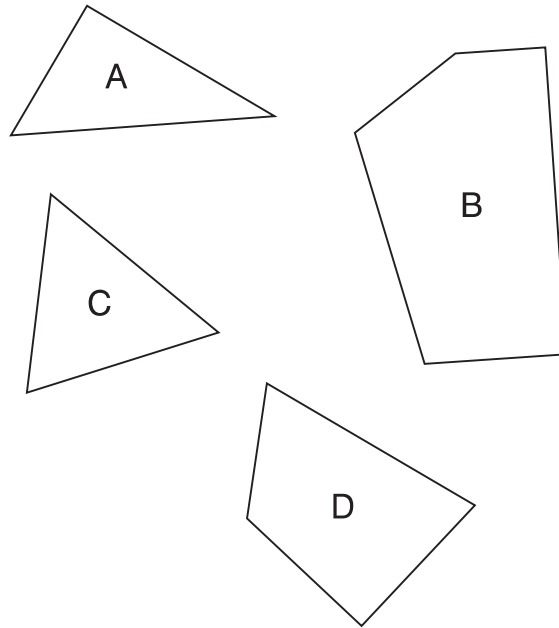


Figure 2

30. Which three pieces below can be fitted together to form a perfect square?



THIS PAGE IS INTENTIONALLY LEFT BLANK

## ***IQ Test Eight***

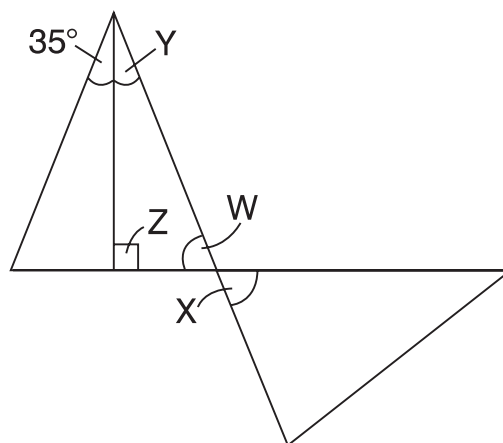
Circle the answer(s), or write in the answer box provided.

1. The metal is in the form of a bar, either straight, or bent into the shape of a horseshoe.

One word has been removed from the sentence above. Select that word from the choice below and reinstate it into its correct place in the passage.

a. over b. across c. lucky d. shaped e. cylindrical f. generally

2.



What is the value of angle X?

Answer

3. Identify two words (one from each set of brackets) that form a connection (analogy), thereby relating to the words in capitals in the same way.

TRIANGLE (height, radius, hypotenuse, angle)

SQUARE (perimeter, diameter, area, tangent)

- 4.

6	4	2	5	4	1		7	2	4	3	5	6
9	8	5	9	7	5		?	?	?	?	?	?

The top set of six numbers has a relationship to the set of six numbers below. The two sets of six boxes on the left have the same relationship as the two sets of six boxes on the right. Which set of numbers should therefore replace the question marks?

A 

11	5	8	7	9	9
----	---	---	---	---	---

B 

9	7	6	8	7	11
---	---	---	---	---	----

C 

10	6	7	7	8	10
----	---	---	---	---	----

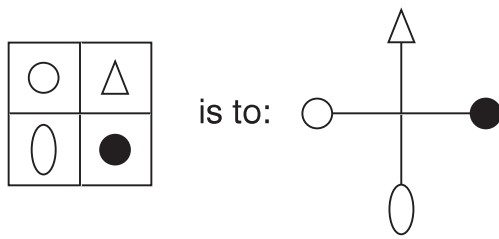
D 

10	6	7	8	9	11
----	---	---	---	---	----

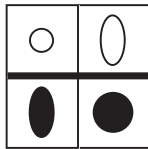
E 

1	1	1	1	1	10
---	---	---	---	---	----

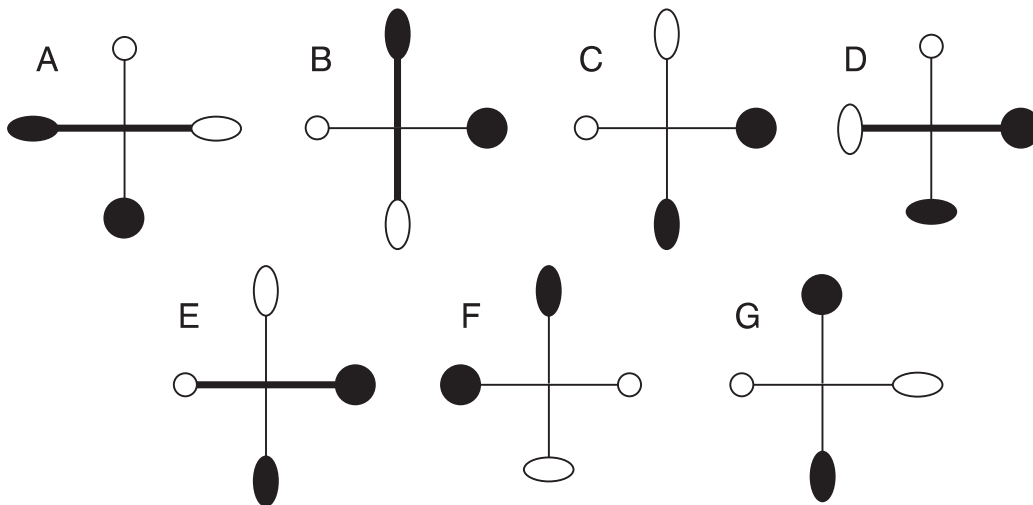
5.



as:



is to:



6. A \_\_\_\_\_ is a \_\_\_\_\_ of two or more \_\_\_\_\_ who have \_\_\_\_\_ to work together, each \_\_\_\_\_ skills, \_\_\_\_\_ and resources to the \_\_\_\_\_ in return for a \_\_\_\_\_ of the \_\_\_\_\_.

Insert the 12 words below into their correct position in the above passage.

association, agreed, business, contributing, formally, labour, partnership, people, pre-arranged, profits, share, venture

88 Advanced IQ tests

7.  $\begin{matrix} 3 & 2 & 8 & 4 \\ 7 & 6 & 9 & 3 \\ 9 & 5 & 6 & 4 \\ 2 & 1 & 9 & ? \end{matrix}$

What number should replace the question mark?

Answer

8. Select two words that are synonyms, plus an antonym of these two synonyms, from the list of words below.

punitive, wearisome, tiresome, energetic, exhilarating, arduous, tough

9.  $58 \times 23 = 166.75 \times ?$

Complete the equation by correctly identifying the missing part of the calculation from the list of options below.

- a.  $\sqrt{196}$    b.  $14 - 2^2$    c. 9   d.  $\sqrt{81} - 2$    e.  $2^3$

- 10.

—	○	⊖
	?	
+	○	⊕

Draw the contents of the middle tile in accordance with the rules of logic already established.

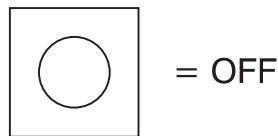
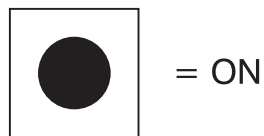
11. An electrical circuit wiring a set of four lights depends on a system of switches A, B, C and D. Each switch when working has the following effect on the lights:

Switch A turns lights 1 and 2 on/off or off/on

Switch B turns lights 2 and 4 on/off or off/on

Switch C turns lights 1 and 3 on/off or off/on

Switch D turns lights 3 and 4 on/off or off/on



In the following, switches A D B C are thrown in turn, with the result that Figure 1 is transformed into Figure 2. One of the switches is therefore not working and has had no effect on the numbered lights.

Identify which one of the switches is not working.

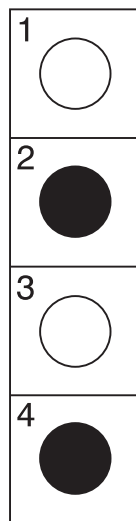


Figure 1

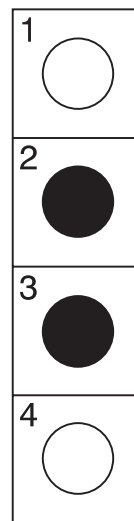


Figure 2



12. 7952 : 1211 : 23

Which set of numbers below has the same relationship to each other as the numbers above?

- a. 3482 : 2408 : 16   b. 3496 : 1254 : 39   c. 8278 : 1510 : 25  
d. 8217 : 9090 : 99   e. 9487 : 1612 : 37

13. Which is the odd one out?

- A %%%@+\*\*\*\$\*++\$\$  
B \*\$\*++\$\$%%@+\*\*  
C %@+\*\*\*\$\*++\$\$%%  
D \$%%@+\*\*\*\$+\*+\$  
E +\$\$%%@+\*\*\*\$\*+

14. Which two words are most opposite in meaning?

pithy, serene, garrulous, amusing, inexorable, ostentatious

15.  $\frac{1080}{?} = \sqrt{81} \times \sqrt{64}$

Complete the equation by correctly identifying the missing part of the calculation from the list of options below.

- a.  $5^2 - 8$    b. 13   c.  $3^3 + 7$    d. 15   e. 14.75

16. Which word in brackets is closest in meaning to the word in capitals?

ESCHEW (conduct, avoid, amplify, escort, spout)

17.

\*@? -Ω●● \*@+ ? -Ω●  
 ● \*@+ ? -Ω●● \*@+ ? -  
 Ω●● \*@+ ? -Ω●●

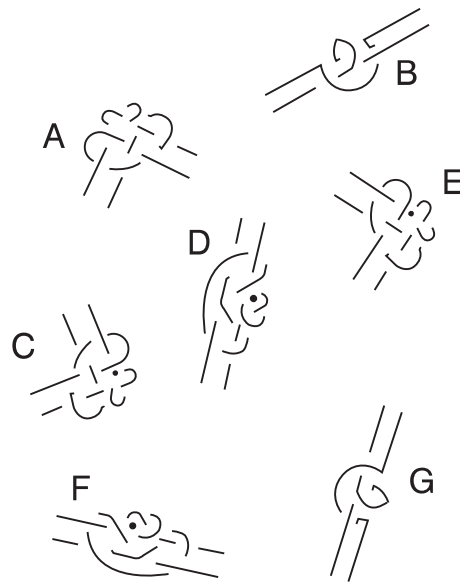
Which symbol is missing?

- A ●
- B Ω
- C \*
- D +
- E ●

18. Change the position of four words only in the sentence below in order for it to make complete sense.

Instead of actively passive radio signals, some of the first communication equipment had no radio satellites aboard and were designed to operate in a transmitting mode.

19. Which is the odd one out?



20. Identify the pair of anagrams from the list of words below.

corniest, esoteric, serotine, ordinate, obtained, monsters, proteins, antipode, bisector, rationed, ptomaine, seniorita, baritone

21. 105, 87, ?, 52, 35

What number should replace the question mark?

Answer

22. Which is the odd one out?

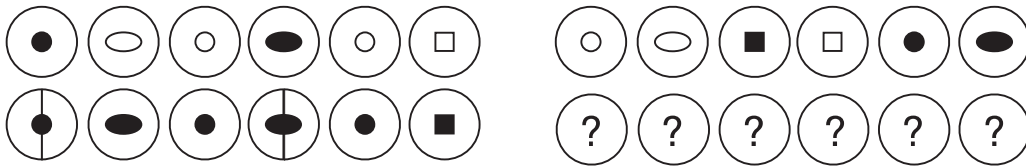
abrogation, repeal, derogation, revocation, institute

23.  $\frac{?}{18} = \frac{1087 - 422}{1.4 \times 5}$

Complete the equation by correctly identifying the missing part of the calculation from the list of options below.

- a.  $45\% \times 3800$    b.  $(9 \times 5) \times 360$    c.  $\frac{54^2}{36}$    d. 1080   e.  $70^2 \div 2$

24.



Which set of symbols should replace the question marks?

- A
- B
- C
- D
- E

25. A, AB, ABD, ABDG, ABDGK, ??????

What group of letters comes next?

Answer

26. In a right-angled triangle, if the lengths of the two shortest sides are whole numbers exactly and the length of the hypotenuse is 40 cm, what are the lengths of the two shortest sides?

Answer

27. Identify two words (one from each set of brackets) that form a connection (analogy), thereby relating to the words in capitals in the same way.

PALMATE (finger, hand, tree, head)

CORDATE (kidney, string, heart, horn)

28. Select two words that are synonyms, plus an antonym of these two synonyms, from the list of words below.

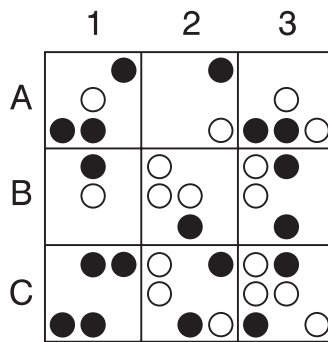
engaging, unremarkable, bogus, arresting, apprehensive,  
undisguised, disdainful

29. In the two numerical sequences below, one number that appears in the top sequence should appear in the bottom sequence and vice versa. Which two numbers should be changed round?

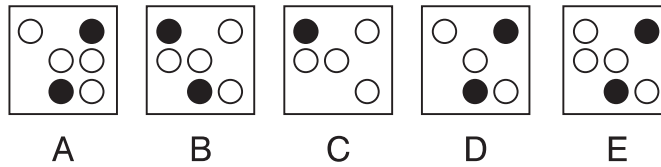
110, 90, 69, 45, 24, 0

111, 90, 68, 47, 21, -4

30.



Looking at lines across and down, if the first two tiles are combined to produce the third tile, with the exception that like lines or symbols are cancelled out, which of the above tiles is incorrect, and with which tile should it be replaced?



THIS PAGE IS INTENTIONALLY LEFT BLANK

## ***IQ Test Nine***

Circle the answer(s), or write in the answer box provided.

1.  $(68 + 42) \times ? = \frac{308}{5}$

Complete the equation by correctly identifying the missing part of the calculation from the list of options below.

a. 48%   b. 56 %   c. 58%   d. 60%   e. 62%

2. You have two bags each containing six balls. The first bag contains balls numbered 1 to 6 and the second bag contains balls numbered 7 to 12. A ball is drawn out of bag one and another ball is drawn out of bag two. What are the chances that at least one of the balls drawn out is an odd-numbered ball?

Answer

3. Which word in brackets is most opposite in meaning to the word in capitals?

TACITURN (gauche, aggressive, indiscreet, unreserved, judicious)



4.

7	3	1	5	4	5		7	8	4	1	3	7
6	5	6	2	4	8		?	?	?	?	?	?

The top set of six numbers has a relationship to the set of six numbers below. The two sets of six boxes on the left have the same relationship as the two sets of six boxes on the right. Which set of numbers should therefore replace the question marks?

- A 

8	2	4	5	9	8
---	---	---	---	---	---
- B 

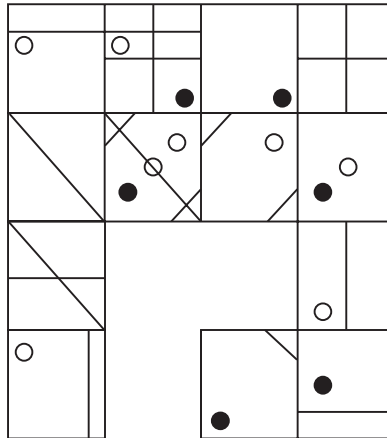
9	4	4	5	8	9
---	---	---	---	---	---
- C 

6	8	4	8	7	9
---	---	---	---	---	---
- D 

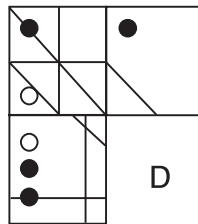
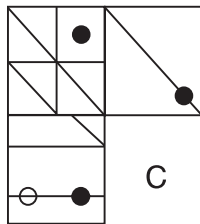
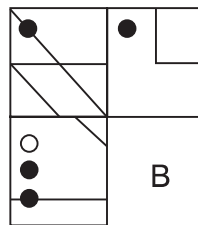
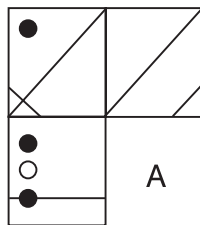
8	4	2	5	9	8
---	---	---	---	---	---
- E 

4	1	3	8	7	7
---	---	---	---	---	---

5.



Which is the missing section?



6.

A	G	D	K	G	R	K
F	R	N	L	A	B	D
L	B	B	F	F	N	N
K	N	R	A	L	D	B
D	D	G	G	K	K	R
N	K	A			L	G
B	L	F			F	A

Which is the missing section?

D	R
B	N

A

R	D
N	B

B

D	R
N	B

C

R	D
B	N

D

7. Which is the odd one out?

secret, hat, dollar, coat, notch

8. A marble statue is being carved by a sculptor. In the first week 35% is cut away, in the second week 20% of the remainder is cut away and in the third week 25% of the remainder is cut away and polished to produce the final statue. The weight of the final statue is 48.75 lbs. What was the weight of the original piece of marble?

Answer

9.

& \$ \* ? @ + # — Ω & \$ \* ? @ + # —  
 Ω & \$ \* ? @ + # — Ω & ? @ + # —  
 Ω & \$ \* ? @ + # — Ω

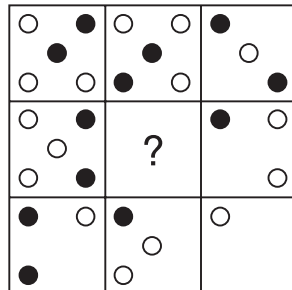
Which two symbols are missing?

- A & \$
- B \* ?
- C \$ \*
- D \$ &
- E \* \$

10. Select two words that are synonyms, plus an antonym of these two synonyms, from the list of words below.

blessed, spurned, unlucky, refined, hapless, impolite, allied

11.



Draw the contents of the middle tile in accordance with the rules of logic already established.

12. Change the position of four words only in the sentence below in order for it to make complete sense.

The long flower bud splits and develops into an oval fruit that blooms open at maturity, revealing a mass of immature white hairs that cover the numerous seeds.

13. Which is the odd one out?

A ▲▲▼▶▶◀▲▼▶▶▶▶◀▼▲▼▲

B ▶◀▼▲▼▲▶▶▶▶◀▲▼▶▶▲▲▼

C ▶▶◀▲▼▶▶▶▶◀▼▲▼▲▲▲▼

D ▶◀▼▲▼▲▲▲▼▶▶▶▶◀▲▼▶▶

E ▶◀▲▼▶▶▶▶◀▼▲▼▲▲▲▼▶

14. Identify two words (one from each set of brackets) that form a connection (analogy), thereby relating to the words in capitals in the same way.

DINGLE (corrie, dell, depression, abyss)

GULCH (wide, coomb, glen, canyon)

15. In a game of eight players lasting for 90 minutes, four reserves alternate equally with each player. This means that all players, including the reserves, are on the pitch for exactly the same length of time. For how long is each player on the pitch?

Answer

16. Insert numbers into the remaining blank squares so that the sums in each line and column are correct. All numbers to be inserted are less than 10.

	+		÷		=	3
×	■	-	■	×	■	+
	-		×	2	=	
÷	■	×	■	-	■	-
	-	3	+		=	
=	■	=	■	=	■	=
3	+		-		=	

17. Select two words that are synonyms, plus an antonym of these two synonyms, from the list of words below.

keen, aromatic, synthetic, acrid, redolent, avid, natural

- 18.



Which two symbols are missing?

- A --
- B - ▲
- C ▲▲
- D ▲ -
- E ▼▲

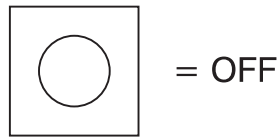
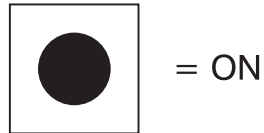
19. An electrical circuit wiring a set of four lights depends on a system of switches A, B, C and D. Each switch when working has the following effect on the lights:

Switch A turns lights 1 and 2 on/off or off/on

Switch B turns lights 2 and 4 on/off or off/on

Switch C turns lights 1 and 3 on/off or off/on

Switch D turns lights 3 and 4 on/off or off/on



In the following, switches B A C D are thrown in turn, with the result that Figure 1 is transformed into Figure 2. One of the switches is therefore not working and has had no effect on the numbered lights.

Identify which one of the switches is not working.

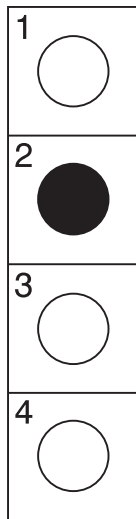


Figure 1

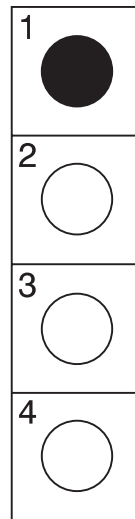


Figure 2

$$20. \quad 9 \times ? = 7 \times \frac{405}{0.3125 \times 16}$$

Complete the equation by correctly identifying the missing part of the calculation from the list of options below.

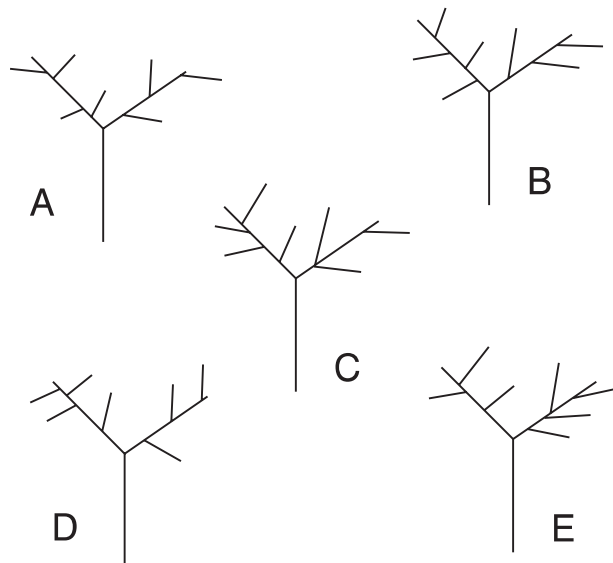
a.  $(45 \times \frac{7}{5})$    b.  $4^3$    c.  $189 - 122$    d.  $107.5 - 43.5$    e.  $50 \times 120\%$

21. A B C D E F G H

What letter is immediately to the right of the letter which comes four to the left of the letter that comes midway between the letter immediately to the right of the letter B and the letter immediately to the left of the letter H?

Answer

22. Which is the odd one out?





23. He worried that his business would inevitably suffer if nothing was done to relieve the burden of interest rates.

One word has been removed from the passage above. Select that word from the choice below and reinstate it into its correct place in the passage.

a. primary b. bank c. high d. money e. profit f. exchequer

24. A company produces 864 white, black and red motor vehicles per week in the ratio 1 : 5 : 3. How many black cars does the company produce per week?

Answer

25. Which word in brackets is closest in meaning to the word in capitals?

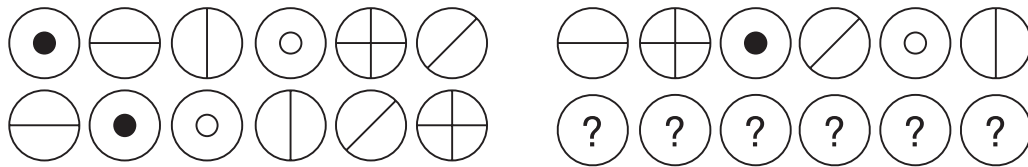
SANGUINE (pallid, wholesome, pious, sure, cheerful)

26. In the two numerical sequences below, one number that appears in the top sequence should appear in the bottom sequence and vice versa. Which two numbers should be changed round?

88, 84, 70, 60

97, 91, 82, 76

27.



Which set of symbols should replace the question marks?

- A
- B
- C
- D
- E

28. GERARD VARUNA is an anagram of which two words (4, 8 letters long) that are opposite in meaning?

Answer

29. Identify two words (one from each set of brackets) that form a connection (analogy), thereby relating to the words in capitals in the same way.

LETTUCE (flower, leaf, stalk, vegetable)

POTATO (root, pulse, jacket, tuber)

30. 10, 11, 13, 17, 25, ? , 73

What number should replace the question mark?

Answer

## IQ Test Ten

Circle the answer(s), or write in the answer box provided.

- Each set of nine numbers relates to the other in a certain way. Work out the logic behind the numbers in the left-hand box in order to determine which numbers are missing from the right-hand box.

12	21	6		28	?	14
27	3	15		63	?	35
18	9	24		42	21	?

Answer

- Which word in brackets is most opposite in meaning to the word in capitals?

QUERULOUS (petulant, equable, worried, hopeful, straightforward)

3. Select two words that are synonyms, plus an antonym of these two synonyms, from the list of words below.

flagrant, toneless, subtle, blemished, ornate, gracious, blatant

4. 5, 16, 49, ?, 445

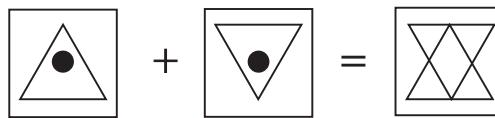
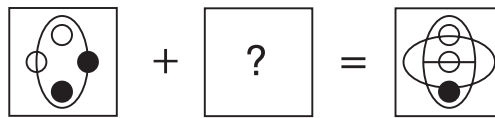
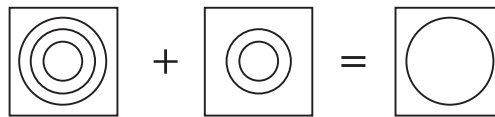
What number should replace the question mark?

Answer

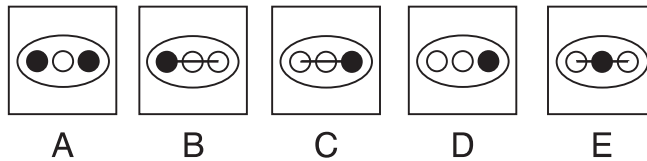
5. How tall is a sapling that is 3 feet shorter than a fence that is four times the height of the sapling?

Answer

- 6.



Which is the missing square?



7. Identify two words (one from each set of brackets) that form a connection (analogy), thereby relating to the words in capitals in the same way.

CIRCO- (globe, travel, around, circle)

DEXTRO- (side, right, front, left)

8. In the two numerical sequences below, one number that appears in the top sequence should appear in the bottom sequence and vice versa. Which two numbers should be changed round?

13, 20, 34, 60, 83

12, 20, 36, 55, 92

9. Change the position of three words only in the sentence below in order for it to make complete sense.

The magnificent city battlements, recently converted into promenades, command a surrounding view of the old alpine scenery.

10.  $\frac{3}{4} \div ? = ?$

Complete the equation by correctly identifying the missing part of the calculation from the list of options below.

a. 130%   b.  $\frac{3 \times 2}{1.5 \times 3}$    c.  $\frac{54}{50}$    d. 1.25   e.  $\frac{270}{225}$

11. Select two words that are synonyms, plus an antonym of these two synonyms, from the list of words below.

curious, pseudo, intrusive, spurious, spiritual, angry, authentic

12. In a right-angled triangle what is the length of the hypotenuse if the two shortest sides are 10 and 24 cm respectively?

Answer

- 13.

‡ & ▲ § β ♀ ♪ ‡ & ▲ § β ♀ ♪ ‡ † & ▲ § β † &  
 ▲ § β ♀ ♪ † & ▲ § β ♀ ♪ † & ▲ § β ♀ ♪ † & ▲ §  
 β ♀ ♪

Which two symbols are missing?

A ▲ §

B ♀ ♪

C § β

D & ▲

E & ▲

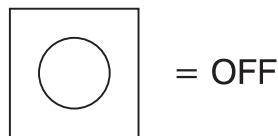
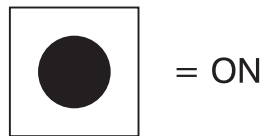
14. An electrical circuit wiring a set of four lights depends on a system of switches A, B, C and D. Each switch when working has the following effect on the lights:

Switch A turns lights 1 and 2 on/off or off/on

Switch B turns lights 2 and 4 on/off or off/on

Switch C turns lights 1 and 3 on/off or off/on

Switch D turns lights 3 and 4 on/off or off/on



In the following, switches D B A C are thrown in turn, with the result that Figure 1 is transformed into Figure 2. One of the switches is therefore not working and has had no effect on the numbered lights.

Identify which one of the switches is not working.

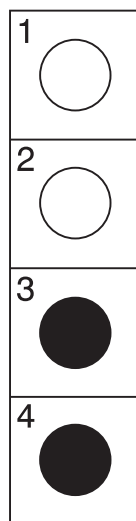


Figure 1

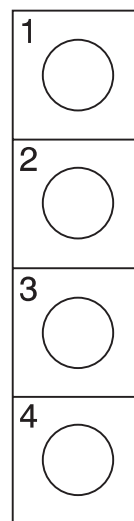


Figure 2