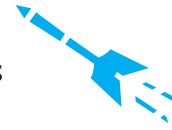


Probability Darts

Find the portion of the dart board that each panel occupies and use your knowledge of degrees and fractions to answer the following questions about probability.

REMEMBER: Probability is the likelihood a given outcome will occur. It is expressed as a fraction.



Fractions

A $\frac{1}{36}$

$\frac{10^\circ}{360^\circ}$

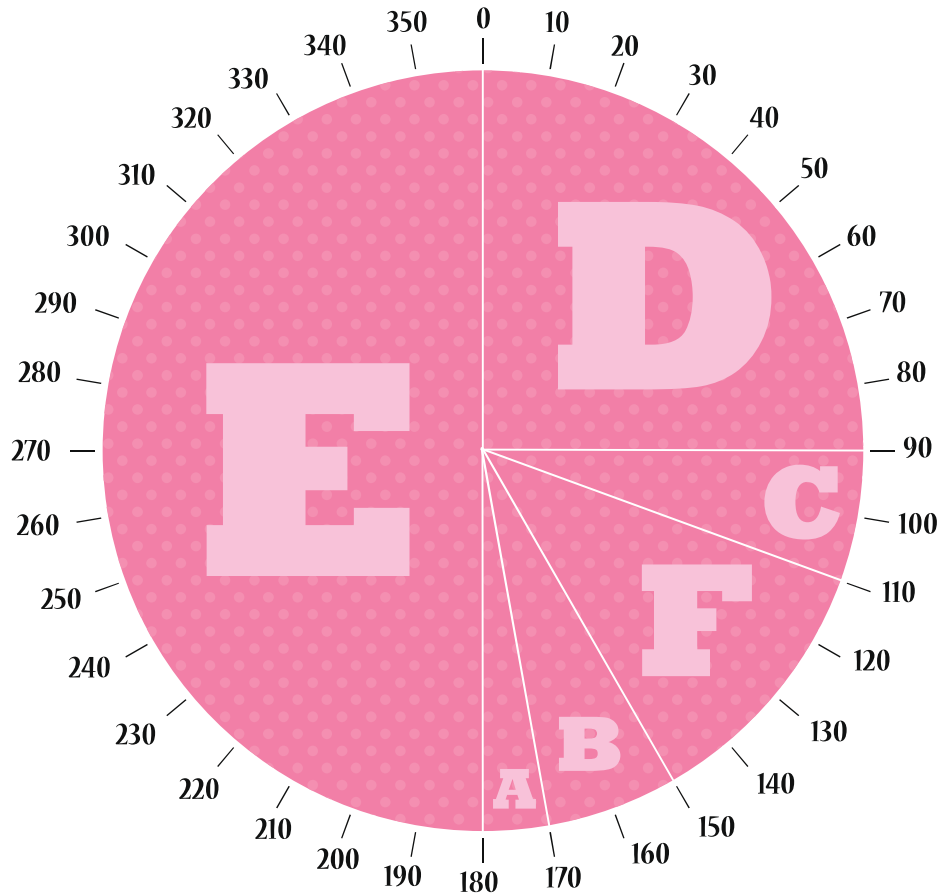
B _____

C _____

D _____

E _____

F _____



Use the information above to answer the questions below.

- 1 Is the next dart thrown more likely to hit a vowel or a consonant?
- 2 What is the probability that the next dart thrown hits panel C or panel B?
- 3 Which panels have a probability less than or equal to $\frac{1}{6}$ that they will be hit?
What is the probability that the next dart thrown hits one of them?

Probability Darts

Find the portion of the dart board that each panel occupies and use your knowledge of degrees and fractions to answer the following questions about probability.

REMEMBER: Probability is the likelihood a given outcome will occur. It is expressed as a fraction.



Fractions

A $\frac{1}{18}$

$20^\circ/360^\circ$

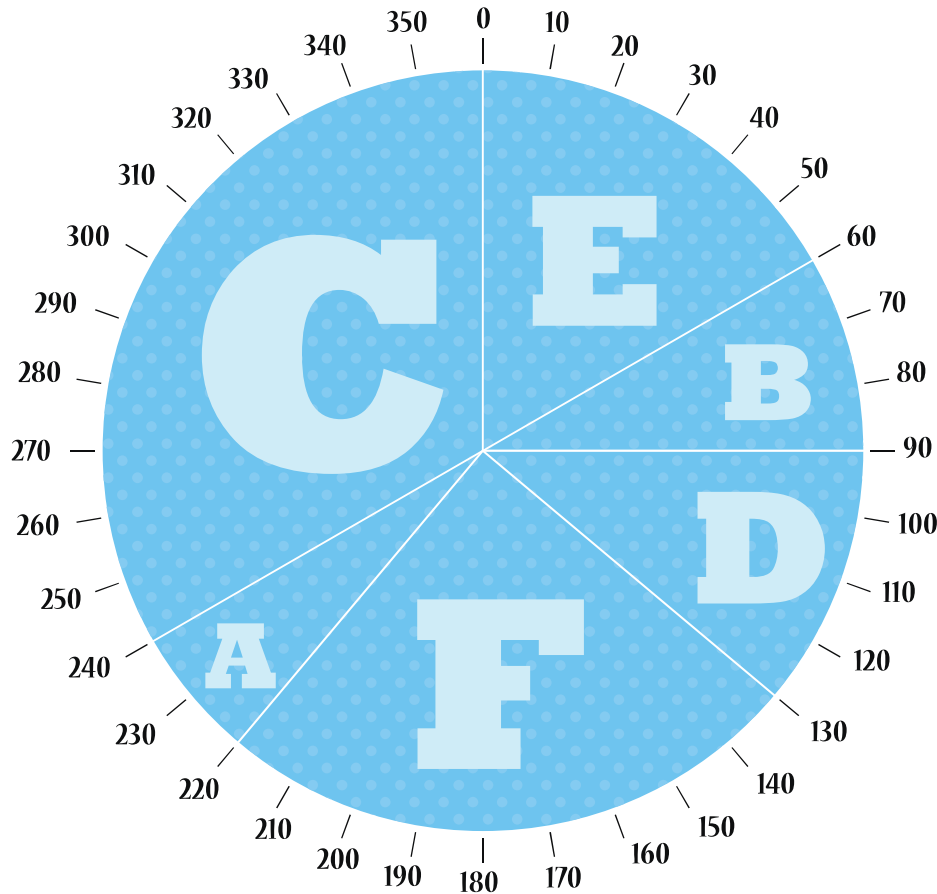
B _____

C _____

D _____

E _____

F _____



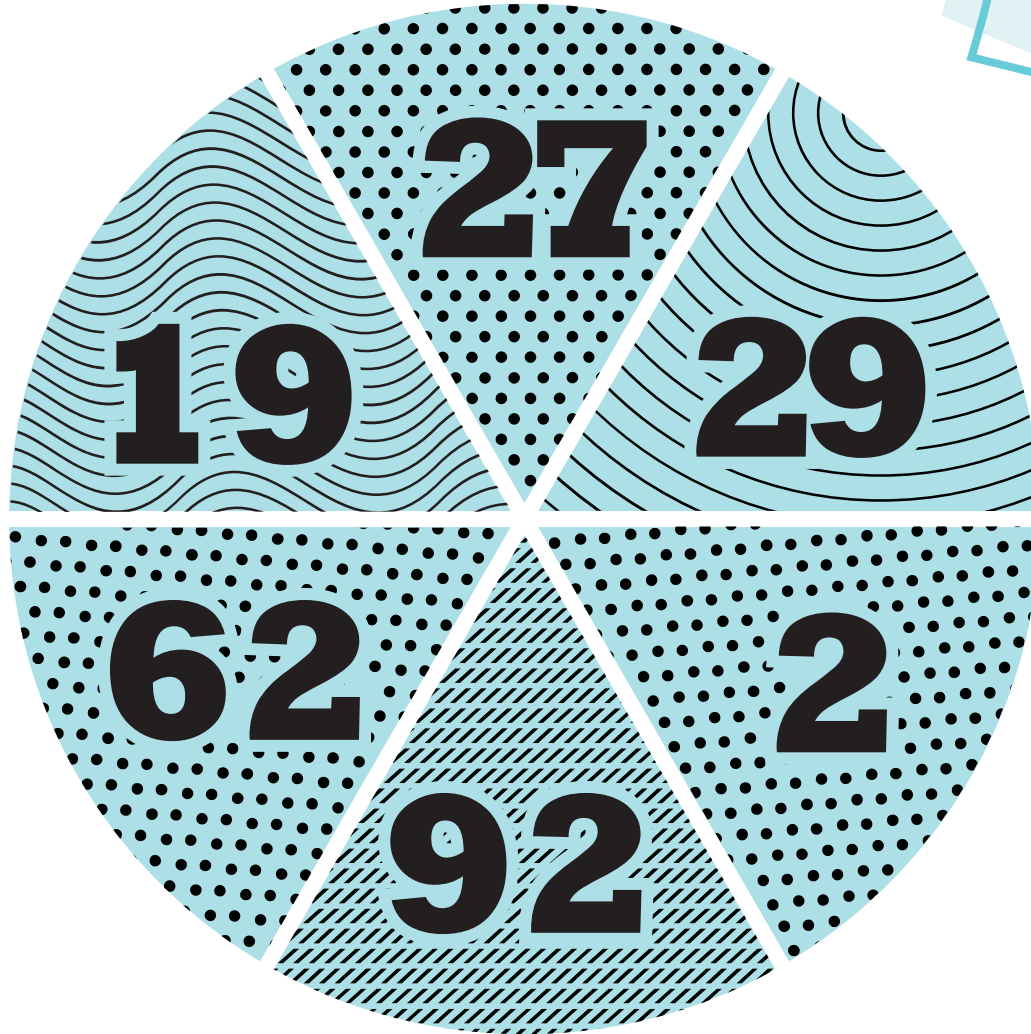
Use the information above to answer the questions below.

- 1 Is the next dart more likely to hit panel C, E, or F? Why?
- 2 What is the probability that the next dart thrown hits a panel with a letter that comes after C alphabetically?
- 3 Write the letters of the panel in the order of most to least probable of being hit.

PROBABILITY TOSS

Use fractions to express the probabilities of each outcome when a dart is thrown.

REMEMBER: Probability is the likelihood a given outcome will occur. It is expressed as a fraction.



What is the probability that the next dart thrown hits a number that....

is greater than 15?

5/6

is an even number?

is less than 61?

has a  pattern?

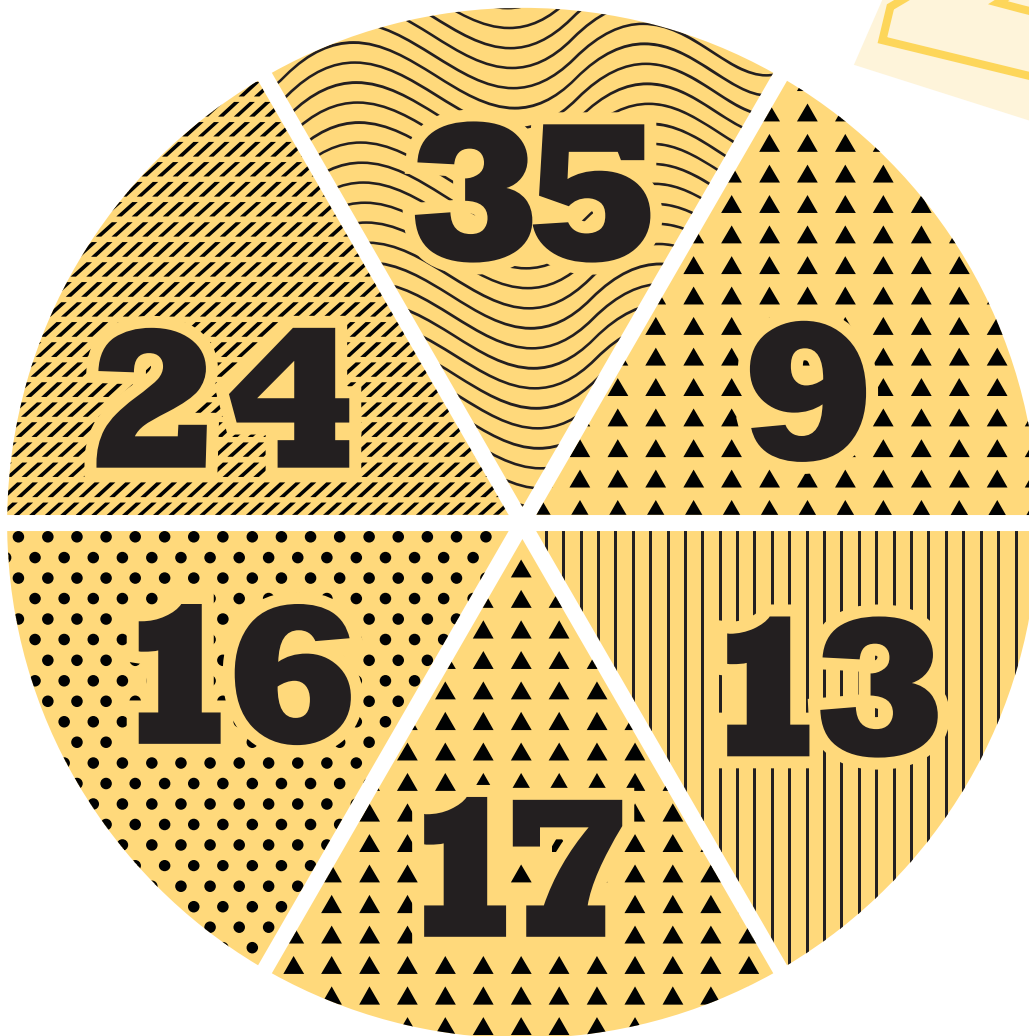
has 9 in the one's digit?

has a 2 in any digit?

PROBABILITY TOSS

Use fractions to express the probabilities of each outcome when a dart is thrown.

REMEMBER: Probability is the likelihood a given outcome will occur. It is expressed as a fraction.



What is the probability that the next dart thrown hits a number that....

is an odd number?

4/6

has a 3 in any digit?

is less than 20 ?

is in the teens ?

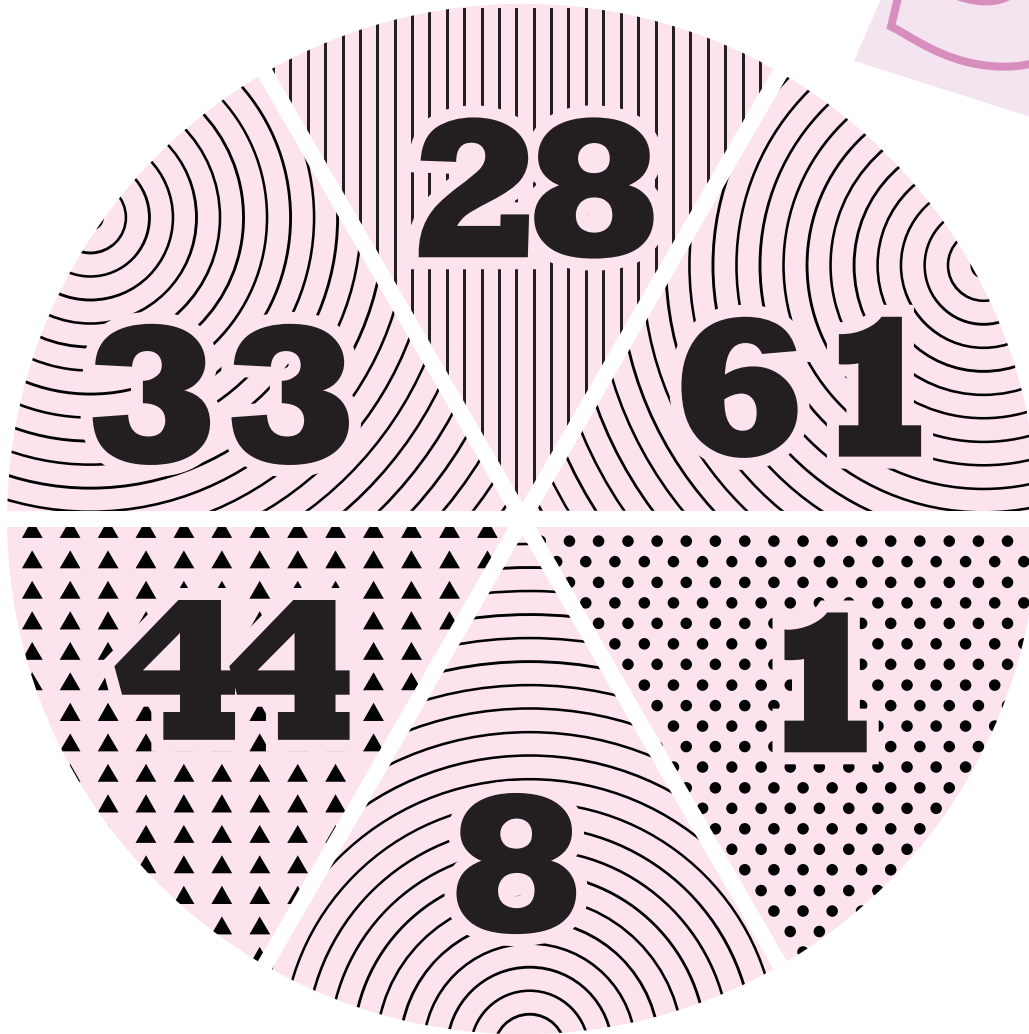
has a  pattern?

has a  pattern?

PROBABILITY TOSS

Use fractions to express the probabilities of each outcome when a dart is thrown.

REMEMBER: Probability is the likelihood a given outcome will occur. It is expressed as a fraction.



What is the probability that the next dart thrown hits a number that....

is a multiple of 11 ?

2/6

is an odd number?

is less than 10 ?

is more than 50 ?

has a  pattern?

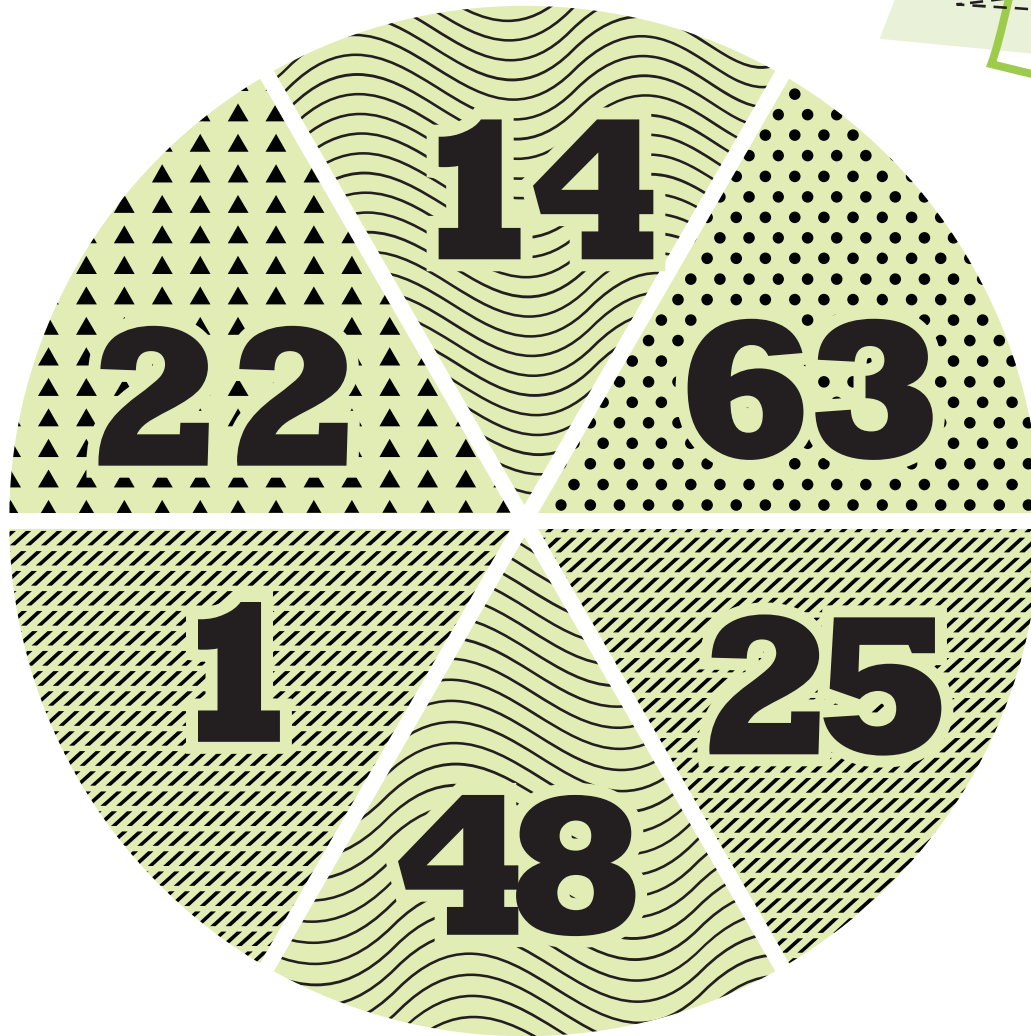
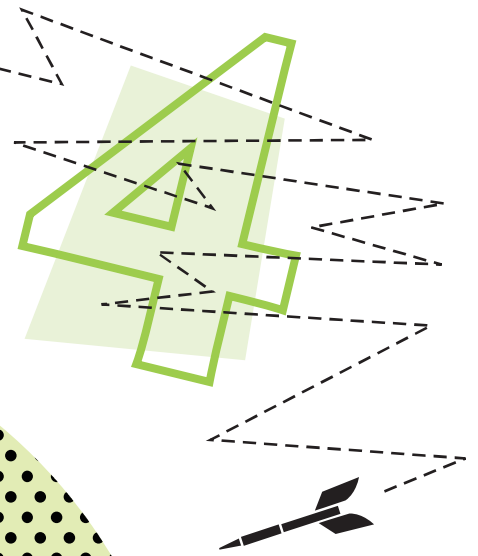
has a 1 in the one's digit?



PROBABILITY TOSS

Use fractions to express the probabilities of each outcome when a dart is thrown.

REMEMBER: Probability is the likelihood a given outcome will occur. It is expressed as a fraction.



What is the probability that the next dart thrown hits a number that....

has a **1** in the **ten's** digit? is a multiple of **4** ?

1/6

has a  pattern?

has a  pattern?

is less than **34** ?

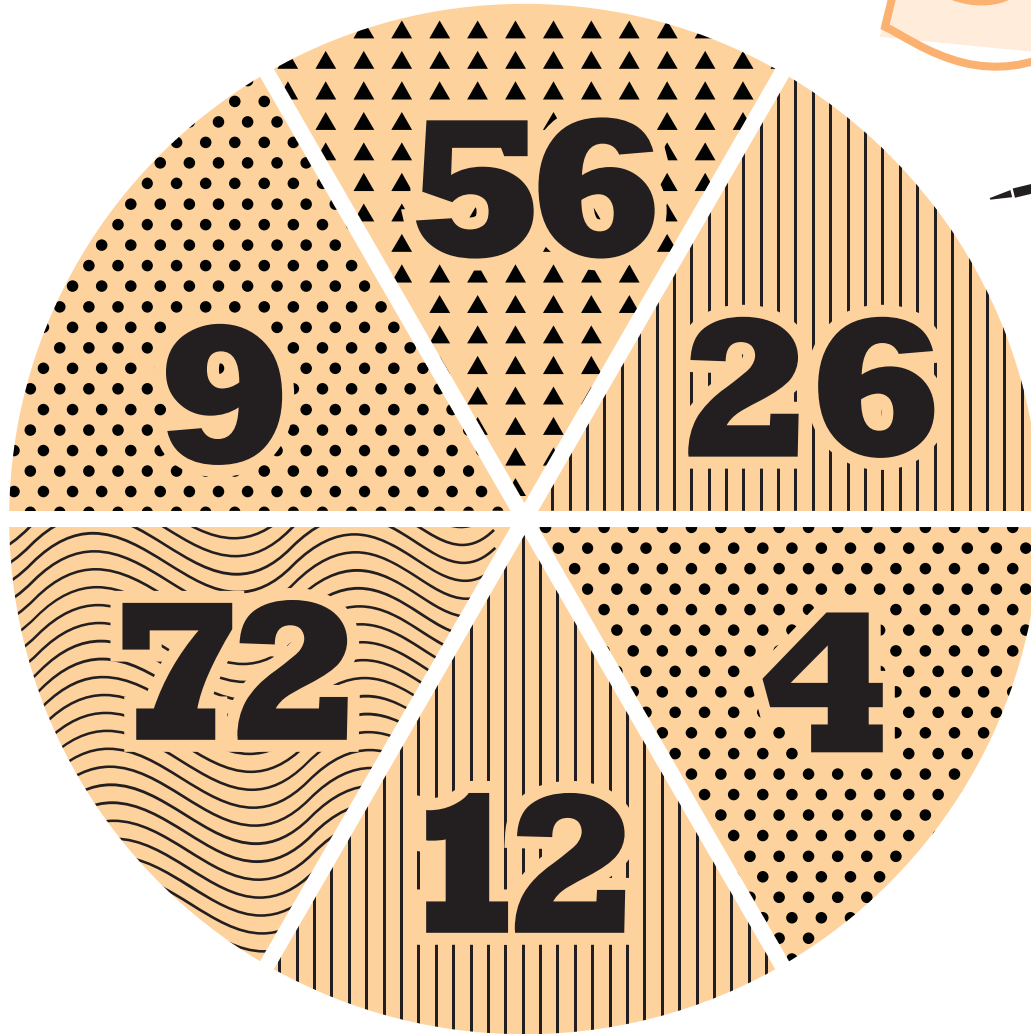
has a **2** in the **ten's** digit?



PROBABILITY TOSS

Use fractions to express the probabilities of each outcome when a dart is thrown.

REMEMBER: Probability is the likelihood a given outcome will occur. It is expressed as a fraction.



What is the probability that the next dart thrown hits a number that....

is an **even** number?

is a multiple of **3** ?

5/6

is a multiple of **9** ?

has a **2** in any digit?

has a  pattern?

is greater than **50** ?

