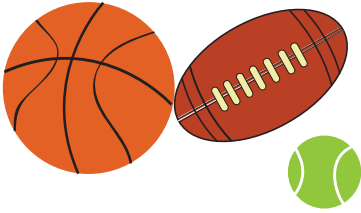


# Place An Order

When you place an order online, there is a shipping fee. Help the shoppers below figure out their shipping fees.

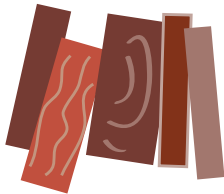
1. Tim ordered sports supplies. The purchase price is \$250. The shipping fee is 3%. How much will Tim pay in total?



2. Ricky ordered 10 cans of paint. The purchase price is \$330. The shipping fee is 4%. How much will Ricky pay in total?

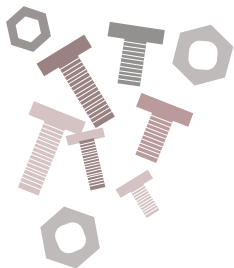


3. Nate ordered wood supplies. The purchase price is \$640. The shipping fee is 5%. How much will Nate pay in total?



## Challenge

Bob wants to get a box of nuts and bolts. If he orders from Billy's Hardware, it costs \$50 and the shipping fee is 6%. If he orders from Pops ToolShop, it costs \$55 and the shipping fee is 4%. Which store should Bob order from so the total price is cheaper?



# Let's Recycle

Andy collects plastic bottles, soda cans and paper bags for recycling. The recycling machine will give change back (in cents). The rates appear below.



$$p + 4 = \text{cents}$$



$$(s + 10)2 = \text{cents}$$



$$3b = \text{cents}$$

The letter  $p$  represents the number of plastic bottles he puts in.

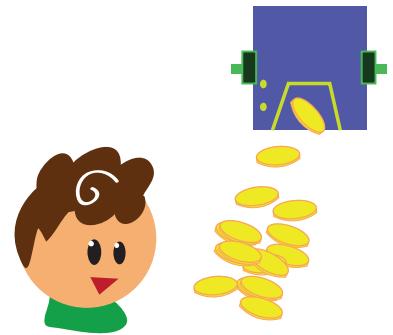
The letter  $s$  represents the number of soda cans he puts in.

The letter  $b$  represents the number of paper bags he puts in.

Find the total amount of change Andy will get if he puts these items in the machine.  
See the example.

On Monday, Andy put 10 plastic bottles, 4 soda cans, and 5 paper bags into the machine.

- Change from the plastic bottle =  $p + 4$ ,  $p = 10$   
Change from the plastic bottle =  $10 + 4 = 14$  cents
- Change from the soda cans =  $(s + 10)2$ ,  $s = 4$   
Change from the soda cans =  $(4 + 10)2 = (14)2 = 28$  cents
- Change from the paper bags =  $3b$ ,  $b = 5$   
Change from the paper bags =  $3(5) = 15$  cents



Andy gets  $14 + 28 + 15 = 57$  cents (\$0.57) from the recycling machine.

On Wednesday, Andy put in 8 plastic bottles, 12 soda cans, and 7 paper bags into the machine.

On Friday, Andy put in 25 plastic bottles, 18 soda cans, and 9 paper bags into the machine.

How much money would Andy get in total from Wednesday and Friday?

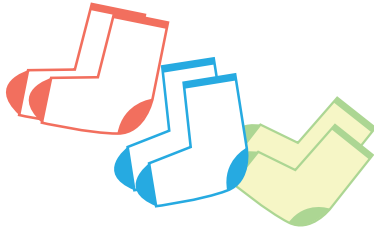
# Price Per Unit

Find the price of each individual item in the packages below. Show your work.

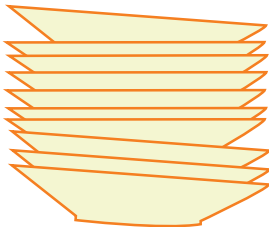
1. A pack of toothbrushes costs \$16. There are 4 toothbrushes in the pack. How much does each toothbrush cost?



- 
2. A dozen pairs of socks costs \$60. How much does each pair cost?



- 
3. A set of dishes costs \$80. There are 10 dishes in the set. How much does each dish cost?



## Challenge

Roxi wants a set of markers. One set of 3 markers costs \$12. Another set of 5 markers costs \$15. Which one is a better deal?



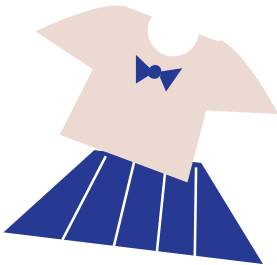
# Back To School

The total price can be found by multiplying the number of items by the cost. Answer the questions below and show your work.

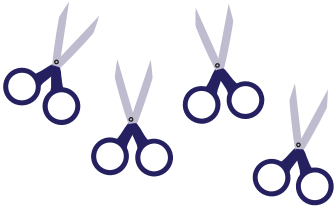
1. Meg bought 20 pairs of socks. Each pair costs \$3. How much did she pay?



- 
2. Liz bought 5 school uniforms. Each uniform cost \$100. How much did she pay?

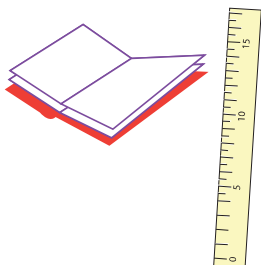


- 
3. Darris bought 4 scissors and 2 glue sticks. Each scissor cost \$5 and each glue stick cost \$1. How much did he pay?



## Challenge

Emily bought 5 notebooks, 10 pencils, 5 markers, and 2 rulers. Each notebook and each ruler cost \$3. Each pencil cost \$0.20 and each marker cost \$2. How much did Emily pay?



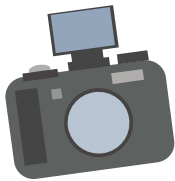
# Commission #1

Commission is a percentage of the product sale price. If a product sale price is \$100, and the commission is 10%, a salesperson will get \$10 in commission. Find out the commission of each salesperson below.

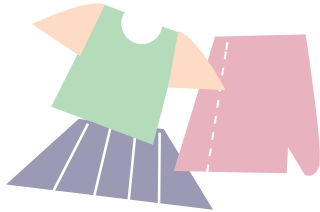
1. Mitsy sold a diamond ring. The sale price is \$5,000. The commission is 1%. How much commission will she get?



2. Jordan sold a camera. The sale price is \$200. The commission is 5%. How much commission will he get?

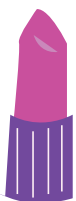


3. Andrea sells women's clothing. Today she sold a total of \$400. The commission is 7%. How much commission will she get?



## Challenge

Ashley sells women's lipstick. She gets \$15 per hour. Today she worked 5 hours and sold \$50 in lipstick. The commission is 3%. How much money did she make today?



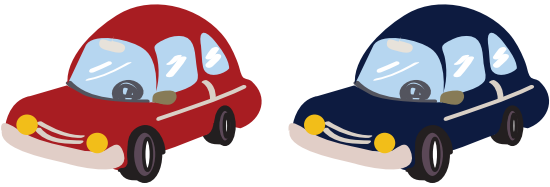
# Commission #2

Commission is a percentage of the product sale price. If a product sale price is \$100, and the commission is 10%, a salesperson will get \$10 in commission. Find out the commission of each salesperson below.

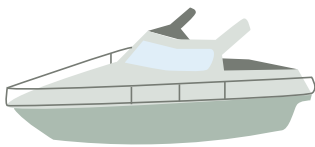
1. Today Troy sold a \$500 flat screen television and a \$600 refrigerator. The commission for selling a television is 2% and 3% for selling a refrigerator. How much commission did Troy earn today?



2. Peter sold two cars today. The red car costs \$10,000 and he will get 1% commission. The blue car costs \$12,000 and he will get 2% commission. How much commission will Peter get from selling these two cars?

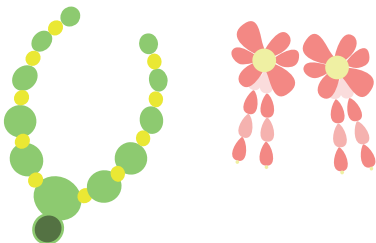


3. Donna sold a boat. The price is \$50,000. Her commission is 0.1%. How much commission will she get?



## Challenge

Rosie sold an emerald necklace that cost \$7,500 and she will get 1% commission. She sold ruby earrings that cost \$2,000 and she will get 4% commission. Which piece of jewelry gives her more commission?



# Sales Tax

Sales tax is different in each state. Find the sales tax each person will pay. Show your work.

1. Ruby bought some clothes that cost \$50. Sales tax in her state is 10%. How much is the sales tax.



- 
2. April bought a handbag that costs \$20. Sales tax in her state is 7%. How much is the sales tax?

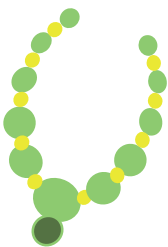


- 
3. Ryan bought a surfboard that costs \$200. Sales tax is 12%. How much is the sales tax?



## Challenge

- 
- Neil bought a necklace that costs \$100. Sales tax is 7.5%. How much will he pay *total*?



# Show Me the Money!

## 6 Digits Subtraction with Decimals

Subtract the dollar amounts. Then answer the question below.



$$\begin{array}{r} \$8,743.22 \\ - \$6,417.58 \\ \hline \end{array}$$

$$\begin{array}{r} \$6,579.68 \\ - \$1,325.25 \\ \hline \end{array}$$



$$\begin{array}{r} \$7,632.19 \\ - \$7,321.71 \\ \hline \end{array}$$

$$\begin{array}{r} \$3,221.37 \\ - \$1,005.61 \\ \hline \end{array}$$



$$\begin{array}{r} \$5,507.34 \\ - \$3,234.87 \\ \hline \end{array}$$

$$\begin{array}{r} \$9,545.47 \\ - \$4,189.92 \\ \hline \end{array}$$

Kenny earned \$9,433.05 last November. He spent \$5,207.15 on Christmas presents. How much does he have left?

