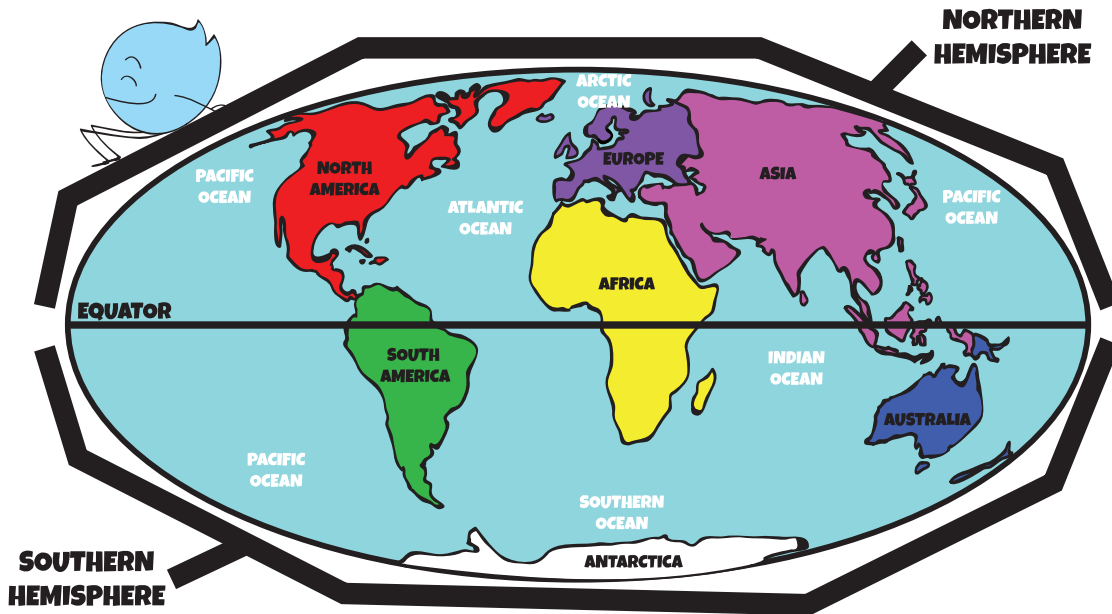


THE NORTHERN AND SOUTHERN HEMISPHERES



Halfway between the North Pole and the South Pole, there is an invisible line called the equator. The equator divides the globe into the Northern and Southern Hemispheres.

FUN FACTS:

The Northern Hemisphere has almost 90% of the land, and the southern hemisphere has almost 90% of the water. Therefore, most of the world's population lives in the Northern Hemisphere.

When it is summer in the Northern Hemisphere, it is winter in the Southern Hemisphere.

The moon seems to be upside down in the Southern Hemisphere.

The sun rises in the east and sets in the west in both hemispheres.

DIRECTIONS: Use the map, and the information above to answer the questions below.

1. If it is summer in North America, what season would it be in Australia? _____
2. In which hemisphere do most of the people in the world live? _____
3. How many continents are at least partly in the Northern Hemisphere? _____
4. If the sun rises in the east in the Northern Hemisphere, which direction does it set in the Southern Hemisphere? _____

Answers: 1. Winter 2. Northern 3. 5 4. West

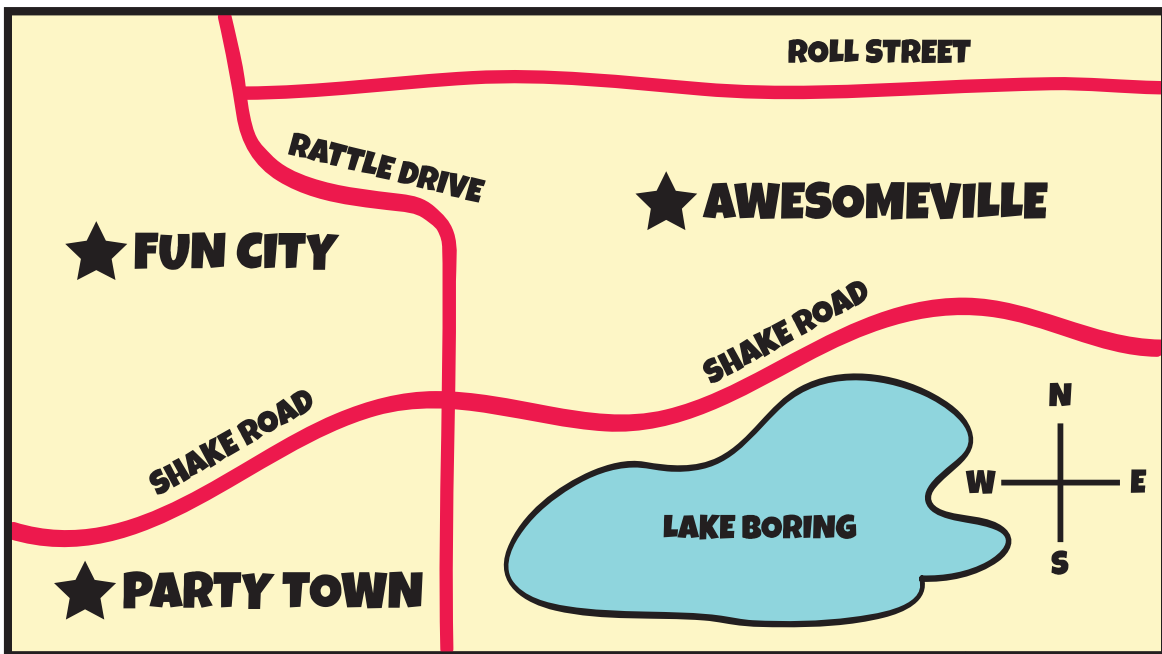
ROAD TRIP!

You will have to travel by car when you get to land, and you'll need to know how to get around.

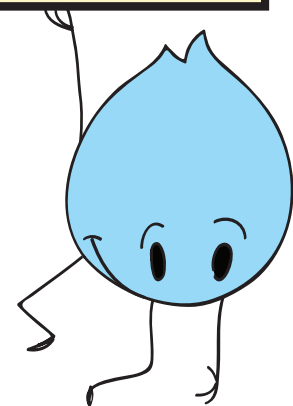
DIRECTIONS:

Check out the map below, and answer the questions.

EXAMPLE: What road divides Fun City and Party Town? (Shake Road)



1. What road runs North and South? _____
2. What city is North of Shake Road? _____
3. What road is North of Awesomeville? _____
4. What landmark is South of Shake Road? _____
5. How many roads run East and West? _____



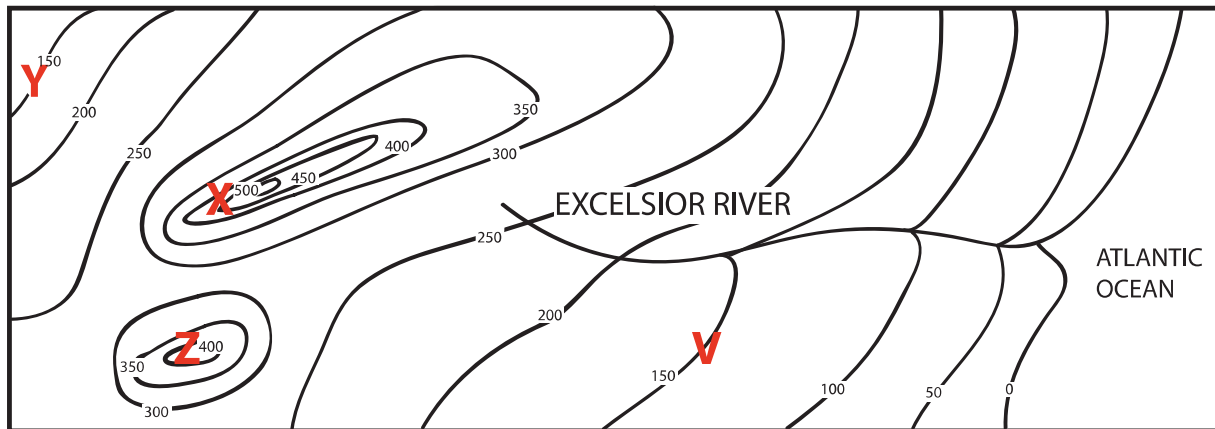
Answers: 1. Rattle Drive 2. Fun City and Awesomeville 3. Roll Street 4. Lake Boring 5. Two

TOPOGRAPHIC OR CONTOUR MAPS

How steep is that hill? Find out by checking the topography of the area. Topography is how tall the land is (this is called elevation).

DIRECTIONS:

Look at the map below. The height of each piece of land is marked in feet with a wavy line. Answer the questions below.



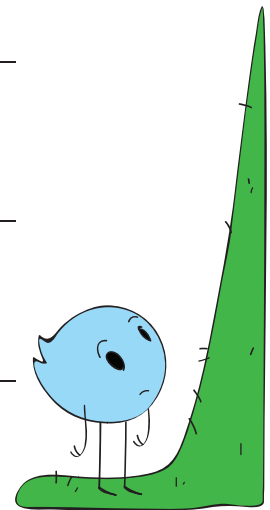
1. If you wanted to build a house at the lowest elevation, where would you build it?

2. What is the tallest point on this map?

3. What type of landform do you think cities X and Z are on?

4. What two cities are the same height?

5. Do you think the Excelsior River flows towards the ocean or away from the ocean? Why?







Answers: 1. by the Atlantic Ocean 2. 500 ft. 3. mountains 4. Y and V 5. Towards the ocean, because the elevation decreases the closer you get to the ocean.

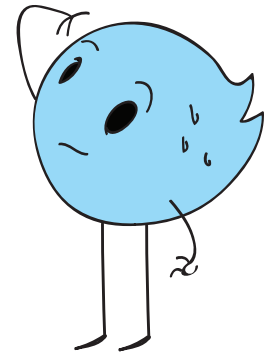
CLIMATE MAPS

Climate maps give you information about the climate (weather) and precipitation (rain and snow). Map makers use different colors to show the differences in climate and precipitation on a climate map.



CLIMATE ZONE KEY:

	Tropical Wet
	Tropical Dry
	Semi-Arid
	Arid
	Mild



DIRECTIONS:

There is a **climate zone key** to the right of the map. Use this key to answer the questions below.

1. What is the climate of Maseru? _____
2. What is the climate of Niamey? _____
3. What is the climate of Cairo? _____
4. What is the climate of Libreville? _____
5. What is the climate of Lusaka? _____

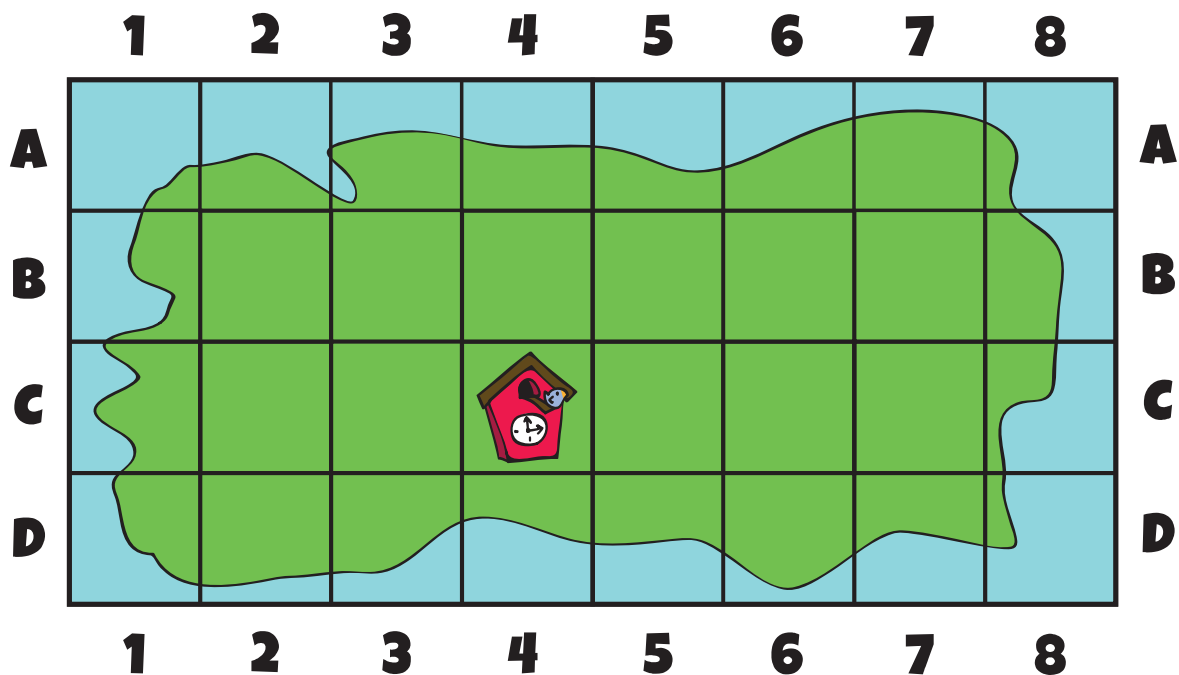
ANSWERS: 1. Mild 2. Semi-arid 3. Arid 4. Tropical Wet 5. Tropical Dry

WHERE AM I?: MAP COORDINATES

While you are travelling, you get stranded on an island. You realize that someone else on the island is trying to take all the incredible items you have found from all the different countries you've visited! You decide to hide the items all over the island, and you create a map so you don't forget where they are.

DIRECTIONS:

Cut out the pictures of your important items below, and glue them in the correct boxes, according to the coordinates on the map.



Example: *Put the cuckoo clock you found in Germany on box C-4.*

1. Hide the kangaroo you got from Australia in box C-6.
2. Bury the gold coins you found in Egypt in box B-2.
3. Stick the flag you got from Canada in box D-2.
4. Store the dried fruit you got from India in box A-7.
5. Put the silks you got from China in box C-2.

