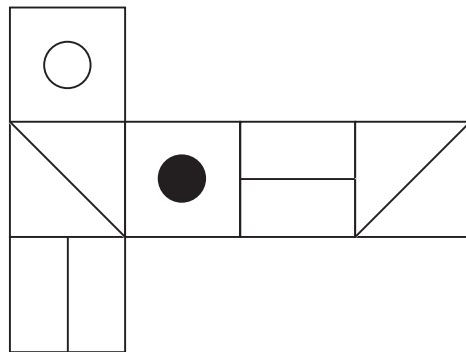


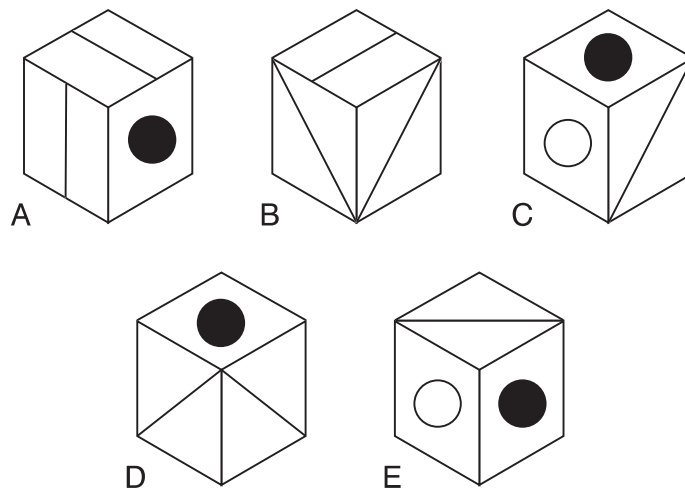
18. If Milly gives Tilly £60 the money they have is in the ratio 2:1; however, if Tilly gives Milly £10 the ratio is 1:3. How much money have Milly and Tilly before they exchange any money?

Answer

- 19.



When the above is folded to form a cube, just **two** of the following can be produced. Which two?



20. 10, 10, 9, 7, 7, ?, 4, 4, 3, 1

What number should replace the question mark?

Answer

21. Select two words that are synonyms, plus an antonym of these two synonyms, from the list of words below.

sanction, define, proscribe, impel, boycott, check, articulate

22.  $\frac{13 \times 82}{4} = 0.125 \times ?$

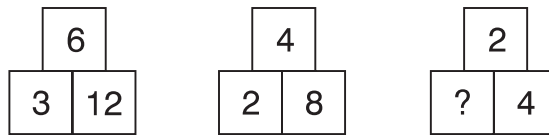
Complete the equation by correctly identifying the missing part of the calculation from the list of options below.

a. 2132   b.  $59 \times 36$    c. 8696   d.  $\frac{2312}{2^2}$    e.  $58 \times 36$

23. Which logically is the odd one out?

dosage, before, volume, simple, curate

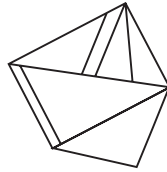
- 24.



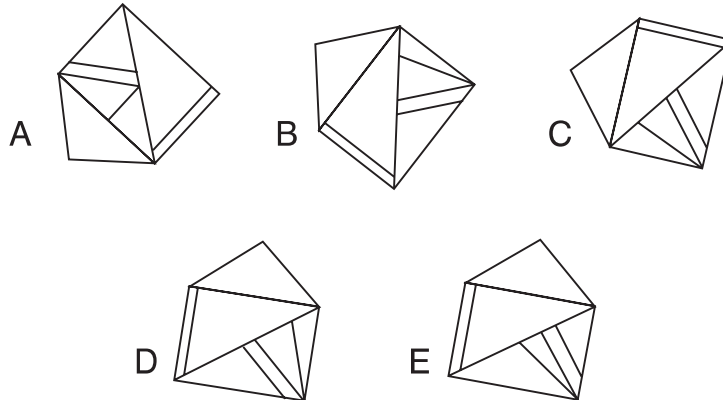
What number should replace the question mark?

Answer

25.



Which one of the figures below can be formed by rotating the figure above?



26. Gordon is twice as old as Tony was when Gordon was as old as Tony is now.

The combined age of Gordon and Tony is 112 years. How old are Gordon and Tony now?

Answer

27. Using every letter of the phrase GIBBON CABLES ACE COBRA once each only spell out the names of three vegetables.

---

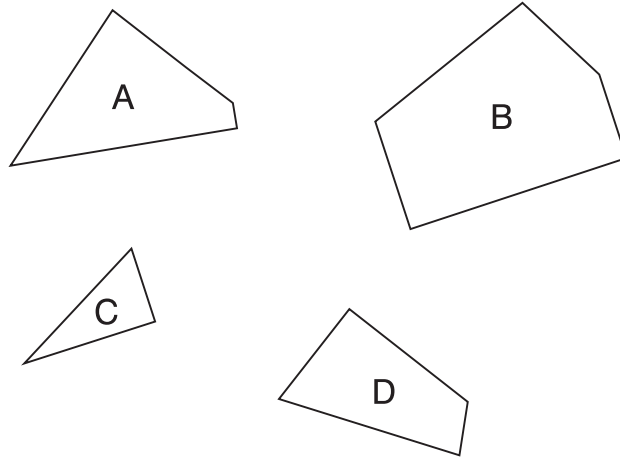
28. What word in brackets is most opposite in meaning to the word in capitals?

REVOKE (modify, conserve, exalt, implement, countermand)

29. The time is 14 minutes to the hour on a clock in which the numbers on the face are shown in Roman numerals. Arrange the numerals below in the order in which they appear from the minute hand reading anti-clockwise.

III XI VII IX IV

30. Which three of the four pieces below can be fitted together to form a perfect square?



THIS PAGE IS INTENTIONALLY LEFT BLANK

## ***IQ Test Four***

Circle the answer(s), or write in the answer box provided.

1. I WINE ON VIP OPTION is an anagram of which two words that are similar in meaning (7, 9 letters long)?  

---

2. 329 : 15

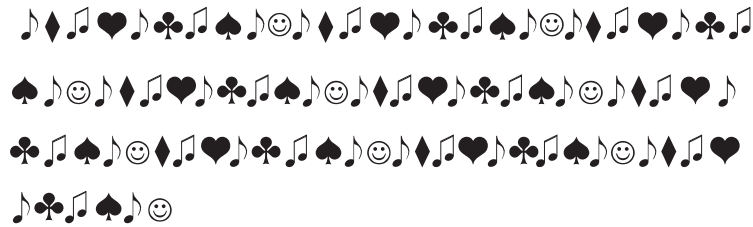
746 : 34

Which numbers below have the same relationship to each other as the two sets of numbers above?

- a. 287 : 22   b. 698 : 62   c. 942 : 68   d. 382 : 12   e. 749 : 35

40 Advanced IQ tests

3.



Which symbol is missing?

- A ☺
- B ♪
- C ♣
- D ♠
- C ♡

4. Place two letters in each set of brackets so that they form a word when tacked onto the letters on the left and form another word when placed in front of the letters on the right. The letters placed in the brackets must produce an eight-letter word when read downwards in pairs.

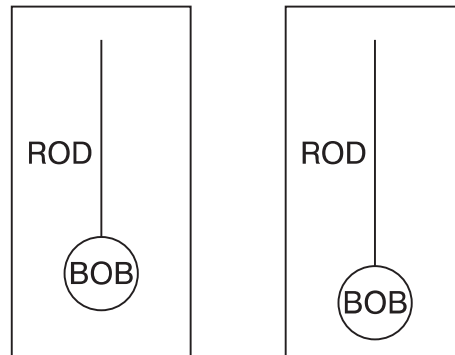
HE	(**)	LY
HO	(**)	AR
AU	(**)	NK
CO	(**)	CH

$$5. \quad ? + 58 = \frac{5^4 \times 60\%}{\sqrt{81} - \sqrt{16}}$$

Complete the equation by correctly identifying the missing part of the calculation from the list of options below.

a.  $51 \times \frac{3}{9}$    b.  $3^3 - 2^3$    c.  $70\% \times 27$    d.  $2.5 \times 7$    e. 16.5

6.



Which of the following factors is most likely to determine that the pendulums on the two clocks will swing back and forth at exactly the same rate?

- a. the size of the pendulum arc
  - b. the length of the rod or string
  - c. the weight of the bob
  - d. the synchronicity of the timekeeping of the two clocks
7. Which is the larger fraction?

$$\frac{3}{7} \quad \frac{13}{28} \quad \frac{5}{14}$$

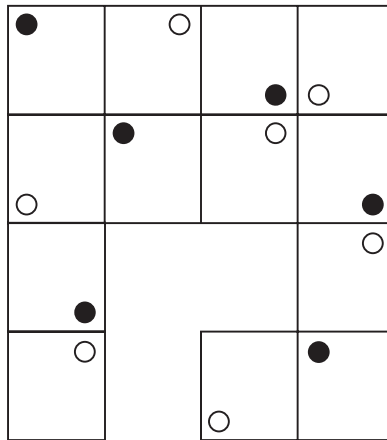


8. Identify two words (one from each set of brackets) that form a connection (analogy), thereby relating to the words in capitals in the same way.

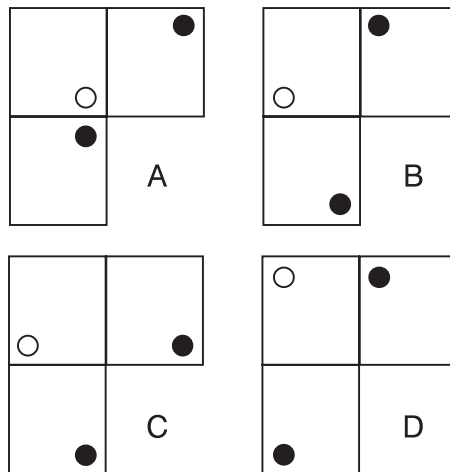
HEADLONG (giddy, wild, gung-ho, frantic)

IMPRUDENT (heedless, impetuous, madcap, confused)

- 9.



Which is the missing section?



10. Select two words that are synonyms, plus an antonym of these two synonyms, from the list of words below.

decant, harangue, crumble, debilitate, weaken, dishonour, invigorate

11.  $3^2 + 27^2 = ?$

Complete the equation by correctly identifying the missing part of the calculation from the list of options below.

a.  $1242 - 505$    b.  $1478 \div 2$    c.  $1232 \times 60\%$    d.  $\frac{12546}{17}$    e.  $\frac{84^2}{9}$

12. Change the position of three words only in the sentence below in order for it to make complete sense.

Imaginary in the Middle Ages, a Bestiary is a type of book that purports to describe all the animals in creation, real or human, and the popular traits they exemplify.

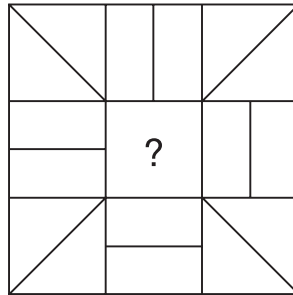
13. A bag of potatoes weighs 50 lbs divided by half of its weight. How much does the bag of potatoes weigh?

Answer

14. Which word in brackets is closest in meaning to the word in capitals?

HERMETIC (sealed, reclusive, audacious, sceptic, close)

15.



Draw the contents of the middle tile in accordance with the rules of logic already established.

16. In the two numerical sequences below, one number that appears in the top sequence should appear in the bottom sequence and vice versa. Which two numbers should be changed round?

2, 5, 11, 15, 47

3, 7, 23, 31, 63

17. A B C D E F G H

What letter comes three to the right of the letter that comes immediately to the left of the letter that comes three to the right of the letter immediately to the left of the letter B?

Answer

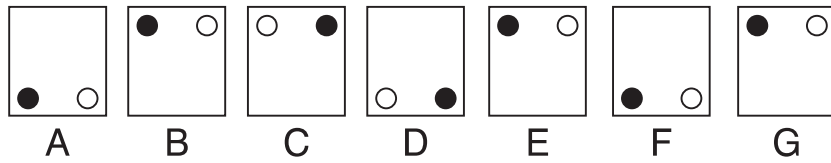
18. How many minutes is it before 12 noon if 1 hour 39 minutes ago it was twice as many minutes past 8 am?

Answer

19. Which word in brackets is most opposite in meaning to the word in capitals?

INDIGENT (rich, peaceful, eager, decorous, powerful)

20. Which does not belong in this sequence?



21. Select two words that are synonyms, plus an antonym of these two synonyms, from the list of words below.

innovative, obstinate, strained, tractable, willing, accessible, brief

22. What number should replace the question mark?

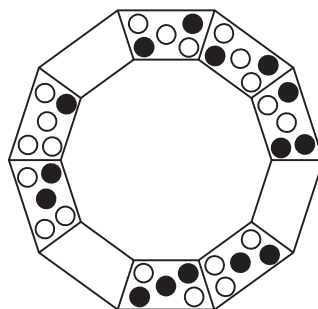
4	2	2	2
3	1	1	4
3	2	1	5
2	3	4	?

Answer

23. Which word does not logically belong in the list below?

glance, anchor, charge, casino, arcade

24. Complete the pattern in accordance with the rules of logic already established.



25.

12	3	7	8	10	18		4	11	2	5	6	13
6	6	14	4	5	9		?	?	?	?	?	?

The top set of six numbers has a relationship to the set of six numbers below. The two sets of six boxes on the left have the same relationship as the two sets of six boxes on the right. Which set of numbers should therefore replace the question marks?

A 

8	6	4	10	3	22
---	---	---	----	---	----

B 

2	22	1	10	3	26
---	----	---	----	---	----

C 

8	22	4	8	12	5
---	----	---	---	----	---

D 

2	5	6	13	11	4
---	---	---	----	----	---

E 

6	6	1	10	12	26
---	---	---	----	----	----

26. The shop is a delight to travellers as it is prepared to outfit anyone for anything, from a walk in the country to an African safari or an Arctic expedition.

One word has been removed from the passage above. Select that word from the choice below and reinstate it into its correct place in the passage.

- a. accomplished b. strenuous c. open d. prospective e. often  
f. substantially

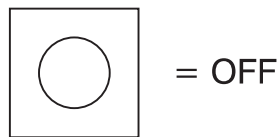
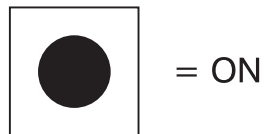
27. An electrical circuit wiring a set of four lights depends on a system of switches A, B, C and D. Each switch when working has the following effect on the lights:

Switch A turns lights 1 and 2 on/off or off/on

Switch B turns lights 2 and 4 on/off or off/on

Switch C turns lights 1 and 3 on/off or off/on

Switch D turns lights 3 and 4 on/off or off/on



In the following, switches D A B C are thrown in turn, with the result that Figure 1 is transformed into Figure 2. One of the switches is therefore not working and has had no effect on the numbered lights.

Identify which one of the switches is not working.

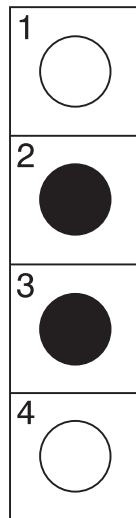


Figure 1

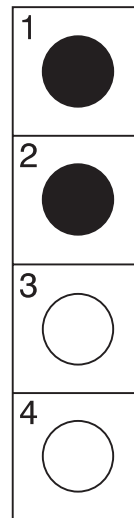


Figure 2

28. 24, 30, ? , 60, 84, 114

What number should replace the question mark?

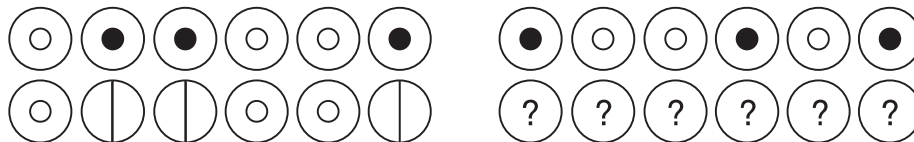
Answer

29. Identify two words (one from each set of brackets) that form a connection (analogy), thereby relating to the words in capitals in the same way.

AMASS (gather, salvage, sustain, keep)

CONSERVE (retrieve, stockpile, protect, reclaim)

30.



Which set of symbols should replace the question marks?

- A
- B
- C
- D
- E

# IQ Test Five

Circle the answer(s), or write in the answer box provided.

1. Which is the odd one out?

A ¥ « £ ¢ μ ¶ ▶ \*

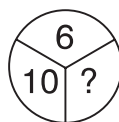
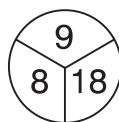
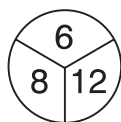
B Π μ ¶ £ ▶ Ω ☀ 🎵

C Ω & Π ☀ 🎵 fl μ ¶

D \* ▶ ¶ μ ¢ £ « ¥

E ¶ μ fl 🎵 ☀ Π & Ω

2.



What number should replace the question mark?

Answer



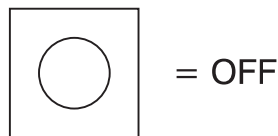
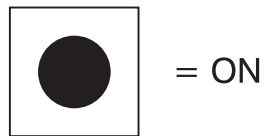
3. An electrical circuit wiring a set of four lights depends on a system of switches A, B, C and D. Each switch when working has the following effect on the lights:

Switch A turns lights 1 and 2 on/off or off/on

Switch B turns lights 2 and 4 on/off or off/on

Switch C turns lights 1 and 3 on/off or off/on

Switch D turns lights 3 and 4 on/off or off/on



In the following, switches C A D B are thrown in turn, with the result that Figure 1 is transformed into Figure 2. One of the switches is therefore not working and has had no effect on the numbered lights.

Identify which one of the switches is not working.

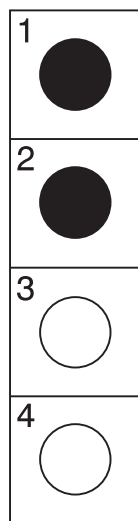


Figure 1

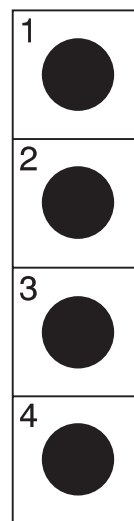


Figure 2

4. 1, 2, 0, 3, ?, 4, ?

What two numbers should replace the question marks?

Answer

5. Identify two words (one from each set of brackets) that form a connection (analogy), thereby relating to the words in capitals in the same way.

QUIRKY (bizarre, irrational, whimsical, erratic)

UNCANNY (singular, eerie, esoteric, amazing)

6. Select two words that are synonyms, plus an antonym of these two synonyms, from the list of words below.

torment, contain, consider, console, assuage, scheme, fraternize

7. In the two numerical sequences below, one number that appears in the top sequence should appear in the bottom sequence and vice versa. Which two numbers should be changed round?

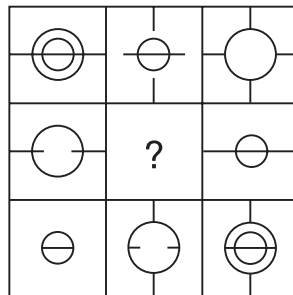
3, 6, 9.5, 14.5, 18, 23

5, 10, 13.5, 18.5, 22

8. Which word in brackets is closest in meaning to the word in capitals?

CHAGRIN (reprehension, revolution, irritation, bedlam, assault)

9.



Draw the contents of the middle tile in accordance with the rules of logic already established.

10.

1	2	4	2
3	6	12	18
1	10	28	58
2	13	51	?

What number should replace the question mark?

Answer

11. Only one group of six letters below can be rearranged to spell out a six-letter word in the English language. Identify the word.

NITLAF

IFCLEA

AHGOLI

OLKECM

FITRAB

RNUMLA

12.  $639 + ? = 2 \times \frac{582 + 381}{3}$

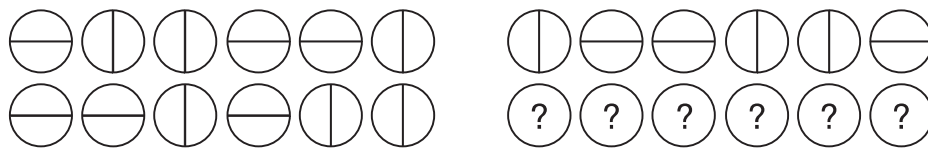
Complete the equation by correctly identifying the missing part of the calculation from the list of options below.

a.  $0.25 \times 11$    b.  $1.5^3 - 0.125$    c.  $\frac{\sqrt{81}}{3}$    d.  $\sqrt{100} - \frac{9}{3}$    e.  $6^2 \div 9$

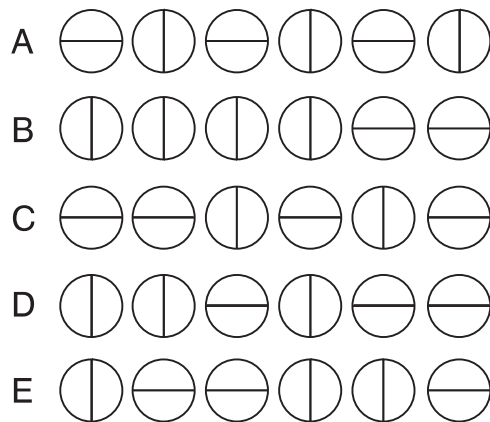
13. Which two words are most opposite in meaning?

virtuous, impecunious, calm, nefarious, nonchalant, fastidious

14.



Which set of diagrams below should replace the question marks?



15. Change the position of five words only in the sentence below in order for it to make complete sense.

If customers like the goods, the product enables them to dislike what to look for in the trademark; if they know the future they will avoid goods with that trademark.

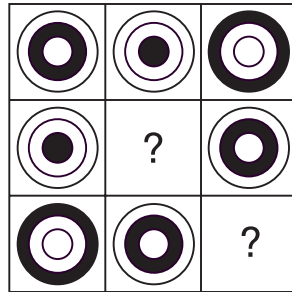
16. Insert numbers into the remaining blank squares so that the sums in each line and column are correct. All numbers to be inserted are less than 10.

	×		-		=	4
+	■	+	■	×	■	+
	×		÷	4	=	
-	■	÷	■	÷	■	÷
	+	5	-		=	
=	■	=	■	=	■	=
4	×		-		=	

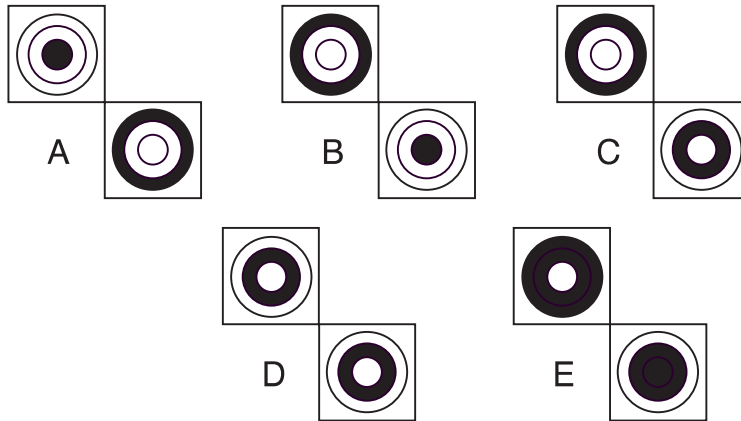
17. Which is the odd one out?

puissant, anodyne, cogent, definitive, trenchant

18.



Which two squares are missing?



19. The average of three numbers is 29. The average of two of these numbers is 38. What is the third number?

Answer

20. A relatively thin envelope, the atmosphere consists of layers of gases that support life and provide protection from radiation. One word has been removed from the passage above. Select that word from the choice below and reinstate it into its correct place in the passage.

- a. hot b. deep c. harmful d. diffused e. moderate f. toxic

21.

&&●&&&○&&&&●&&&○&&●&&&○&&&&  
●&&&○&&●&&&○&&&&●&&&○  
&&&○&&&&●&&&○

Which three symbols are missing?

- A &●&
- B ●&&
- C &&&
- D &&●
- E &○&

22. Public \_\_\_\_\_ sell their \_\_\_\_\_ to the \_\_\_\_\_, whereas \_\_\_\_\_ companies \_\_\_\_\_ shares to, or \_\_\_\_\_, the general public.

Insert the 11 words below into their correct position in the above passage.

can, cannot, companies, from, general, money, private, public, raise, sell, shares

23.

4	8	2	3	9	7		5	9	1	4	3	6
2	9	4	7	3	8		?	?	?	?	?	?

The top set of six numbers has a relationship to the set of six numbers below. The two sets of six boxes on the left have the same relationship as the two sets of six boxes on the right. Which set of numbers should therefore replace the question marks?

A 

4	5	3	1	9	5
---	---	---	---	---	---

B 

1	3	5	6	4	9
---	---	---	---	---	---

C 

9	5	1	6	3	4
---	---	---	---	---	---

D 

8	2	7	9	3	6
---	---	---	---	---	---

E 

2	4	8	1	3	5
---	---	---	---	---	---

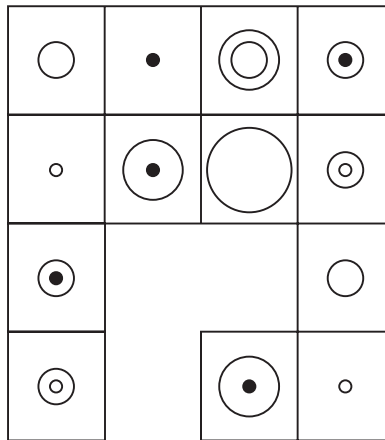
24. Identify two words (one from each set of brackets) that form a connection (analogy), thereby relating to the words in capitals in the same way.

ANSER (duck, owl, goose, eagle)

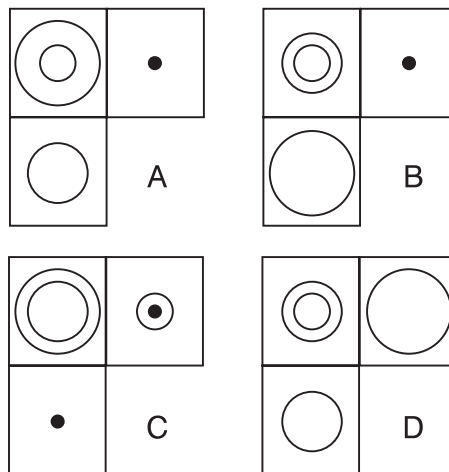
CORVUS (falcon, pelican, crane, crow)



25.



Which is the missing section?



26. 535 : 7580 : 852

483 : 9642 : 716

723 : ? : 633

What number should logically replace the question mark?

Answer

27. HILT is to LMPY  
as DENS is to ????

Answer

28.  $\frac{74}{9.25} \times 4.5 = \frac{? \times 6}{2}$

Complete the equation by correctly identifying the missing part of the calculation from the list of options below.

- a.  $\sqrt{144} + 1.5^2$    b.  $\sqrt{144}$    c.  $\sqrt{169}$    d. 11.5   e.  $2^3 \times 2.5$
29. Select two words that are synonyms, plus an antonym of these two synonyms, from the list of words below.
- brackish, crisp, bold, sinewy, unpolluted, bright, undrinkable

30.



What comes next in the above sequence?



THIS PAGE IS INTENTIONALLY LEFT BLANK

# ***IQ Test Six***

Circle the answer(s), or write in the answer box provided.

1. A B C D E F G H

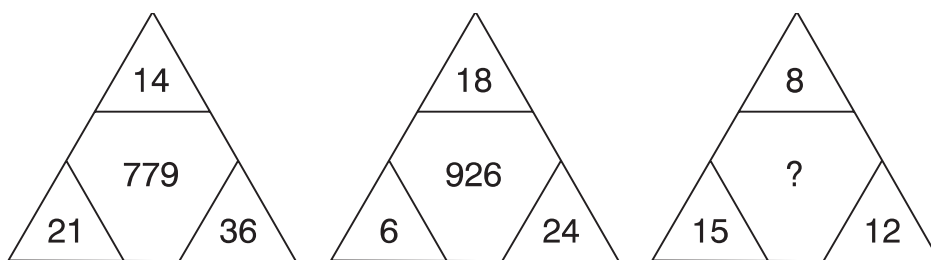
What letter is two to the right of the letter which is four to the left of the letter which is immediately to the right of the letter four to the right of the letter C?

Answer

2. In a right-angled triangle, what is the length of the shortest side if the length of the hypotenuse is 65 cm and the length of the second-longest side is 63 cm?

Answer

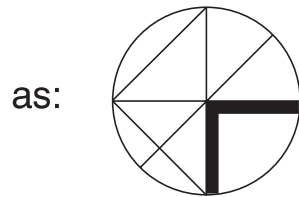
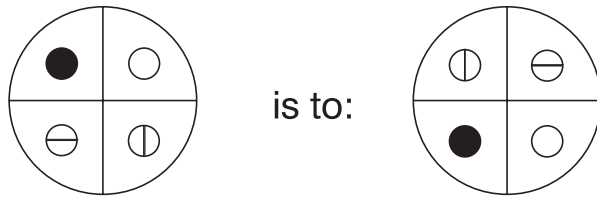
- 3.



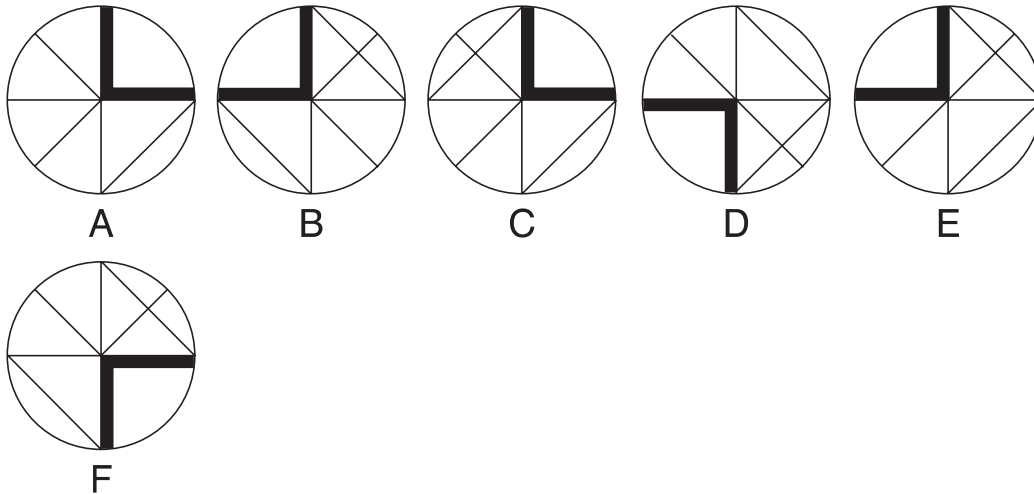
What number should replace the question mark?

Answer

4.



is to:



5. Carrie has 0.125 more than Larry and Larry has  $\frac{3}{4}$  more than Harry. Between them Harry, Larry and Carrie have 151. How many has each?

Answer

6. Change the position of six words only in the sentence below in order for it to make complete sense.

Like the patterns which occur in seasons, such as the heart of the planets, the succession of nature, and the beating of the motion, musical rhythm is usually organized in regularly recurring rhythms.

7.                7382961 is to 2016  
and            3864987 is to 2124  
therefore 7958279 is to ?

Answer

8. Each set of nine numbers relates to the other in a certain way. Work out the logic behind the numbers in the left-hand box in order to determine which number is missing from the right-hand box.

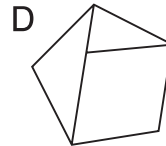
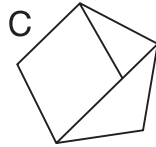
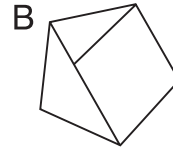
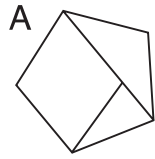
4	9	8		6	8	7
8	7	7		9	7	3
3	7	9		2	8	?

Answer

9. Which is the odd one out?

catwalk, gallery, apron, wings, proscenium

10. Which is the odd one out?



11.     6 4 2                 2 8 5  
        9 8 7    is to    8 7 3  
        3 9 4                 3 6 1  
 as 4 9 6    is to    7 2 3  
        3 7 2                 ? ? ?  
        8 5 3                 ? ? ?

Answer

12. Select two words that are synonyms, plus an antonym of these two synonyms, from the list of words below.

natural, gracious, sudden, charitable, impolite, delicate, idle

13. What is the factorial of 5?

a. 1   b. 120   c. 60   d. 25   e. 15

14. Identify two words (one from each set of brackets) that form a connection (analogy), thereby relating to the words in capitals in the same way.

ENTRANCE (door, antechamber, admittance, access)

EXIT (egress, escape, vanish, stairway)

15. Which is the odd one out?

A ◀#●&\*▼#◀◀Ω●○○▶◀◀◀  
 ◀#●&▼  
 ▼#Ω●○○▶◀◀

B ◀#●&\*▼▼#◀◀Ω●○\*\*\*○▶◀◀◀  
 ◀#●&▼  
 ▼#Ω●○○▶◀◀

C ◀#●&\*▼▼#◀◀Ω●○\*\*\*○▶◀◀◀  
 ◀#●&▼  
 ▼#Ω●○○▶◀◀

D ◀#●&\*▼▼#◀◀Ω●○○▶◀◀◀  
 ◀#●&▼  
 ▼#Ω●○○▶◀◀

E ◀#●&\*▼#◀◀Ω●○○▶◀◀◀  
 ◀#●&▼  
 ▼#Ω●○○▶◀◀

16.  $\frac{\sqrt{81} (\times 7)}{\sqrt{(12.5\% \times 72)}} = \frac{1}{4} ?$

Complete the equation by correctly identifying the missing part of the calculation from the list of options below.

- a.  $9^2 + 5$    b.  $\frac{5}{9} \times 144$    c.  $(197 - 112)$    d.  $\frac{77}{11} \times 14$    e.  $(177 - 93)$



17. In the two numerical sequences below, one number that appears in the top sequence should appear in the bottom sequence and vice versa. Which two numbers should be changed round?

10, 20, 60, 180, 360, 720

10, 30, 60, 120, 360, 1080

18. Which two words are closest in meaning?

farcical, improper, wise, prolific, wild, risible

19. Which of the following is not an anagram of a type of fruit?

rip coat

ova coda

burly beer

real madam

pipe panel

alert women

part figure

20. Out of 384 guests at a conference, a quarter took their coffee with sugar only,  $\frac{5}{8}$  took it with both milk and sugar, one out of every 16 guests took it with milk only and the rest took it black with neither milk nor sugar. How many guests took it black with neither milk nor sugar?

Answer

21. The stiff, intricate branches form around the trunk and are covered with overlapping, scale-shaped leaves.

One word has been removed from the passage above. Select that word from the choice below and reinstate it into its correct place in the passage.

- a. bark b. whorls c. green d. foliage e. tree f. stalks

22. 34, 48, ?, 79, 96

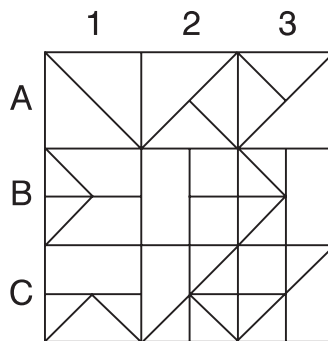
What number should replace the question mark?

Answer

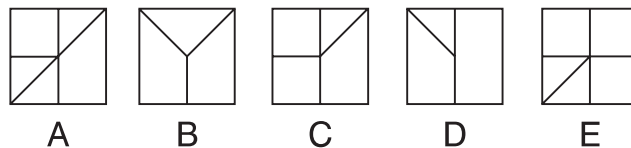
23. Select two words that are synonyms, plus an antonym of these two synonyms, from the list of words below.

mixed, suppressed, variable, firm, flexible, prodigious, microscopic

24.



Looking at lines across and down, if the first two tiles are combined to produce the third tile, with the exception that like lines or symbols are cancelled out, which of the above tiles is incorrect, and with which tile should it be replaced?

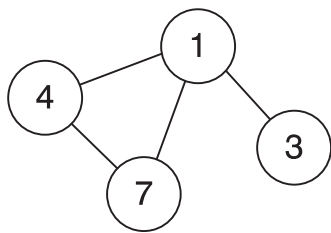


25. FISCAL, SCRIBE, SELECT, INSIDE, MAYHEM, PURIFY, FLANGE

Logically, what word comes next?

GUILTY, RHYTHM, OXYGEN, PENCIL, THIRST

26. Insert the numbers listed into the circles so that – for any particular circle – the sum of the numbers in the circles connected to it equals the value corresponding to that circled number in the list. For example:

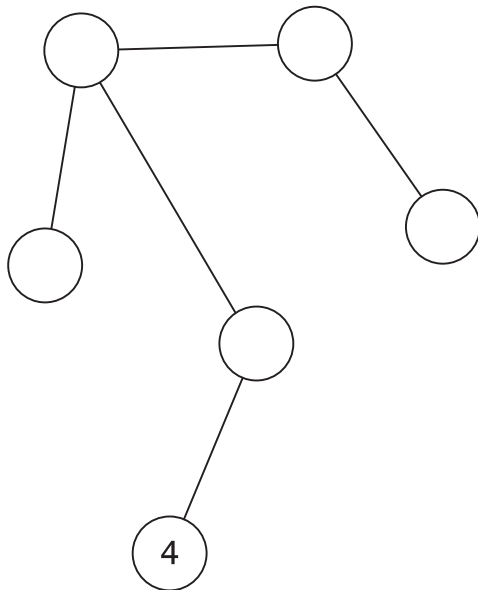


$$1 = 14 (4 + 7 + 3)$$

$$3 = 1$$

$$4 = 8 (1 + 7)$$

$$7 = 5 (1 + 4)$$



$$1 = 14$$

$$2 = 6$$

$$3 = 1$$

$$4 = 5$$

$$5 = 5$$

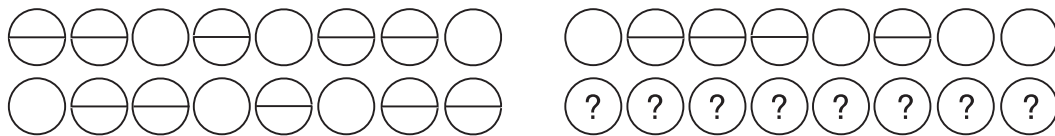
$$6 = 3$$

27. Identify two words (one from each set of brackets) that form a connection (analogy), thereby relating to the words in capitals in the same way.

THUNDEROUS SILENCE (simile, hyperbole, syllepsis, oxymoron)

REVERT BACK (tautology, metaphor, alliteration, metonymy)

28.



Which set of figures should replace the question marks?

- A
- B
- C
- D
- E

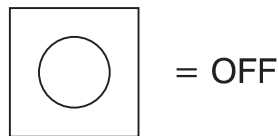
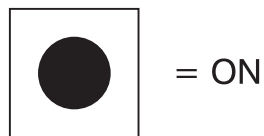
29. An electrical circuit wiring a set of four lights depends on a system of switches A, B, C and D. Each switch when working has the following effect on the lights:

Switch A turns lights 1 and 2 on/off or off/on

Switch B turns lights 2 and 4 on/off or off/on

Switch C turns lights 1 and 3 on/off or off/on

Switch D turns lights 3 and 4 on/off or off/on



In the following, switches C B A D are thrown in turn, with the result that Figure 1 is transformed into Figure 2. One of the switches is therefore not working and has had no effect on the numbered lights.

Identify which one of the switches is not working.

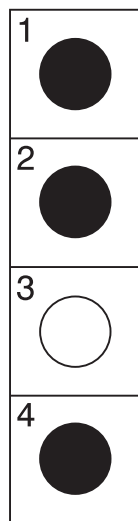


Figure 1

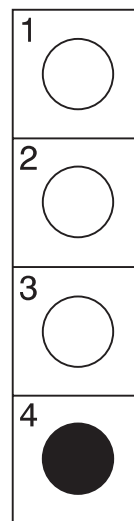
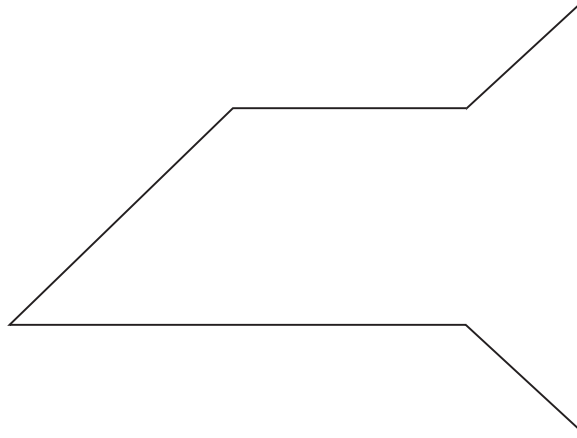


Figure 2

30. By making a single cut, divide the shape below into two identical (size and shape) pieces.



THIS PAGE IS INTENTIONALLY LEFT BLANK

# ***IQ Test Seven***

Circle the answer(s), or write in the answer box provided.

1. What is:

$$\frac{17}{68} \text{ of } 12.5\% \text{ of } \frac{19}{57} \text{ of } \frac{30}{45} \text{ of } 144$$

Answer

2. Use every letter of the phrase PROPOUND RARE MAGIC once each only to spell out the names of three elements.

---

3. At the end of the day one market stall had 16 apples and 48 oranges left. Another market stall had 36 apples and 24 oranges left. What is the difference between the percentages of apples left in the two market stalls?

Answer