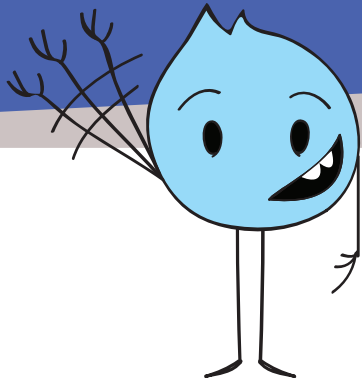


Global Traveler

4th
Grade



Hi!
I'm Eddie
the Explorer.
Let's go around the
world!

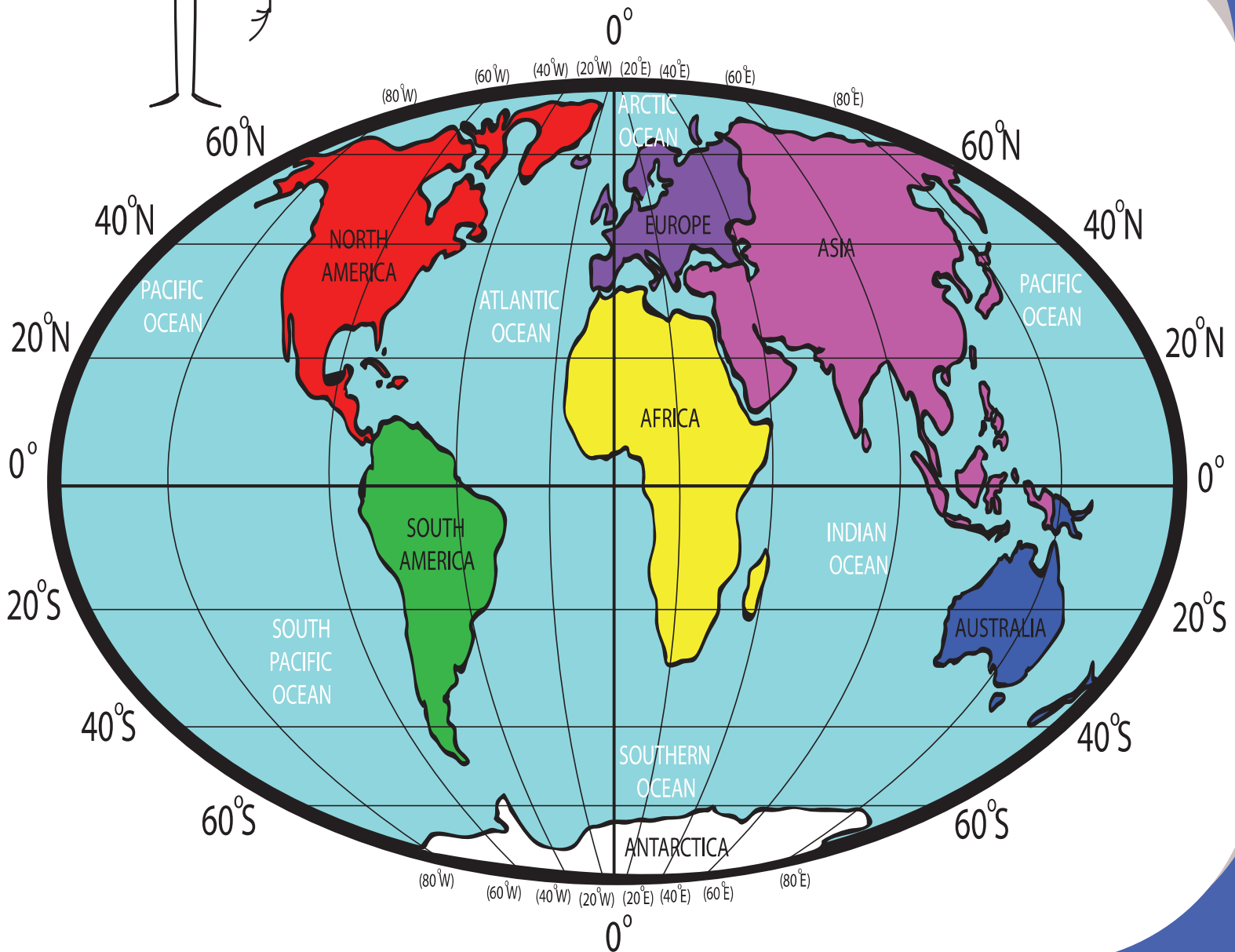


Table of Contents

Global Traveler

The 7 Continents
Different Landforms
Important Lines on the Globe
The Northern and Southern Hemispheres
Road Trip
Topographic or Contour Maps
Climate Maps
Where Am I? Map Coordinates
How to Read a Map Using A Grid and Index
What is Latitude and Longitude, and How Do You Use It?
Map Scale
Maps in History
Economic or Resource Maps
Map Your Own Road Trip Throughout Europe
Create Your Own Map

Certificate of Completion

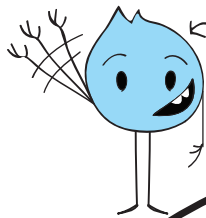
Want more workbooks? Join Education.com Plus to save time and money.
<http://www.education.com/education-plus/>

IDENTIFYING THE CONTINENTS AND LARGE BODIES OF WATER ON OUR GLOBE

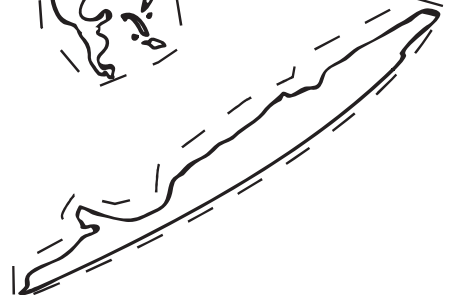
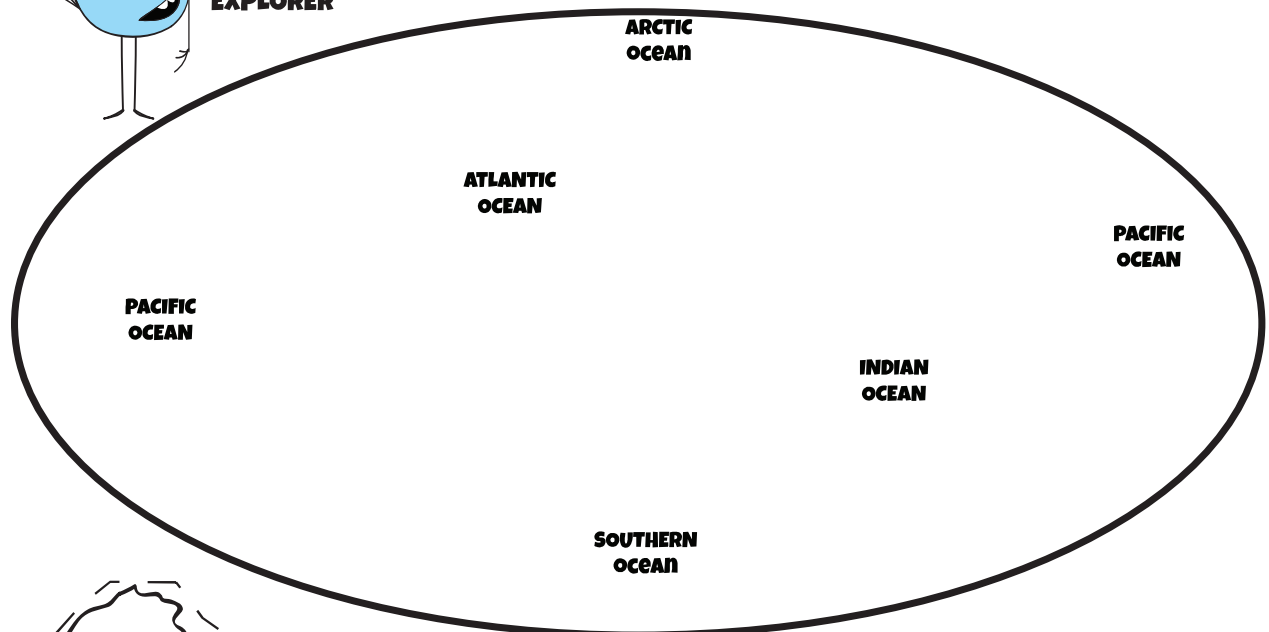
Welcome, Explorer!

First thing's first: get acquainted with the globe. There are seven continents on the planet, and many bodies of water. You'll need to know where all of them are located.

DIRECTIONS: Color in the continents below. Label each continent. Cut them out and glue them in the correct place on the blank globe below.



**EDDIE
THE
EXPLORER**



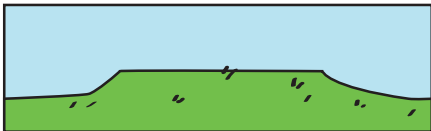
DIFFERENT LANDFORMS

When you are traveling, it's important to know the definitions of each type of land so you know how to travel across it.

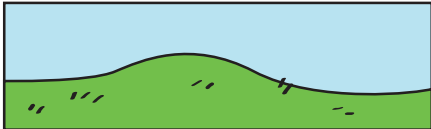
DIRECTIONS:

Draw a line and match the landform picture with the correct definition.

1. Plateau



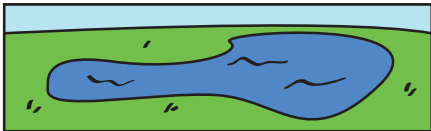
2. Hill



3. Mountain



4. Lake



5. River



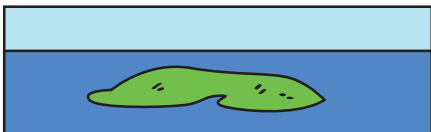
6. Ocean



7. Plain



8. Island



a. A small piece of land with water all around it

b. An area of land that is higher than the land around it, but flat

c. A tall piece of land, usually with steep sides

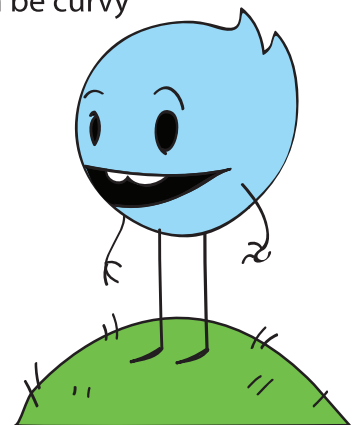
d. A line of water; can be curvy

e. Flat, open land

f. A small mound

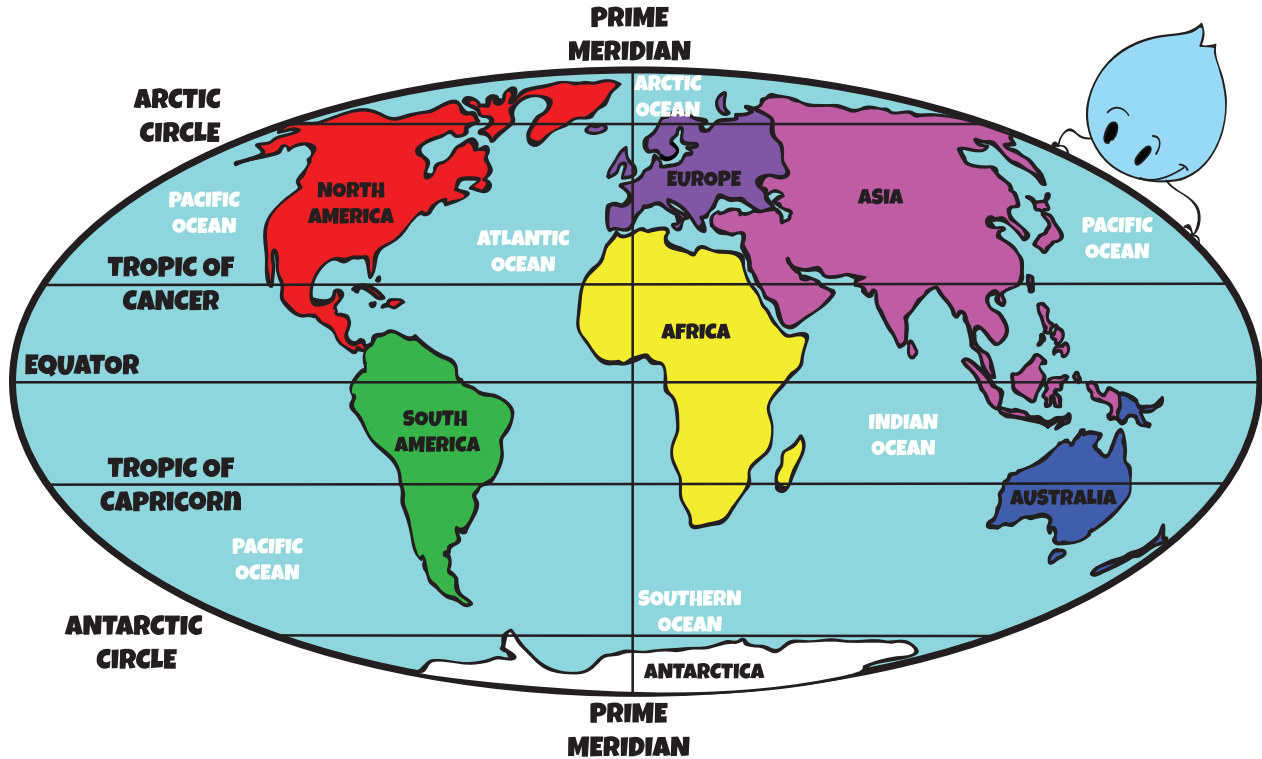
g. A small body of water, with land all around it

h. A very large body of water



Answers: 1. b, 2. f, 3. c, 4. g, 5. d, 6. h, 7. e, 8. a

IMPORTANT LINES ON THE GLOBE



DIRECTIONS: Study the map above. Use it to answer the questions below.

EXAMPLE: What continents does the Tropic of Cancer run through? (North America, Africa and Asia)

1. What continents does the Arctic Circle run through?
 _____, _____ and _____
2. What continents does the Equator run through?
 _____, _____ and _____
3. What major oceans does the Prime Meridian run through?
 _____, _____ and _____
4. What continents does the Tropic of Capricorn run through?
 _____ and _____
5. What major oceans does the Tropic of Cancer run through?
 _____ and _____

Answers: 1. North America, Europe, Asia 2. South America, Africa, Asia 3. Atlantic, Pacific and Indian 4. South America, Africa, Australia 5. Atlantic, Pacific and Southern